



[WWW.IMERUSA.COM](http://WWW.IMERUSA.COM)

# POWERED ACCESS LINE

SCISSOR LIFTS, ARTICULATED AND TELESCOPIC TRACKED PLATFORMS





**TOLL FREE: 800.275.5463**  
**WWW.IMERUSA.COM**



**IMER USA, Inc.**  
221 West Hampton Place  
Capitol Heights, MD 20743  
Tel. (800) 275-5463  
Fax (301) 336-6687

**IMER West**  
3193 Diablo Avenue  
Hayward, CA 94545  
[www.imerusa.com](http://www.imerusa.com)

Due to our ongoing Research and Development efforts these products and their specifications are subject to change without notice.

The California Office of Environmental Health Hazard Assessment Requires this Specific Warning: Cancer and Reproductive Harm - [www.p65warnings.ca.gov](http://www.p65warnings.ca.gov)



IMER Group is an Italian company founded in 1962, a European leading manufacturer of construction machinery and equipment.

For over 50 years our mission is to provide the construction site professionals with the highest quality products which reduce operator fatigue and yield higher performance.

The IMER product range covers all the construction site's needs: from production, laying and transport of mortar and concrete to the cutting of materials and surfaces to elevating people and also to earthmoving.

IMER Access, the IMER Group's Access Platforms Division, manages the self-propelled aerial platforms lines for both scissor and articulated boom platforms, and the crawler access platform line.

The IMER Access production plant – with a footprint of almost 4 acres, of which over 50,000 square feet is indoor - is located in Pegognaga (Mantua).

The wide product range is a direct result of years of experience and specific research in the sector acquired in the most selective worldwide markets. The possibility to customize the specific equipment of each product category allows us to focus on the market, through the constant improvement of products and processes.

## CONTENTS

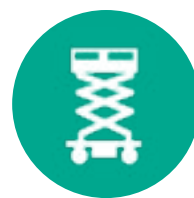
|                                    |    |
|------------------------------------|----|
| <b>IMER Group</b> .....            | 3  |
| <b>IM Scissors</b> .....           | 4  |
| <b>IM 3230 E</b> .....             | 8  |
| <b>IM 3540 E / IM 3546 E</b> ..... | 10 |
| <b>IM 4746 E / IM 4752 E</b> ..... | 12 |
| <b>IM 7049 RT E</b> .....          | 14 |
| <b>IM R Series</b> .....           | 18 |
| <b>IM R 19</b> .....               | 20 |
| <b>IM R 13 T</b> .....             | 22 |



**We build** partnerships and collaborations all over the world.







# ELECTRIC POWERED

## SERIES IM SCISSOR LIFTS

IMER's Electric Scissor Lifts lead the industry with innovative technologies as a direct result of years of experience, concentrated research, and a goal to provide superior products that deliver unparalleled productivity and safety.

The IMER IM Series includes five models of scissors which all fill a unique void in the market and share innovative technologies plus a commonality of parts, which simplifies maintenance and improves parts costs and accessibility.

Engineered to be compact and light-weight for easy clearance and maximum versatility. The reduced size, generous capacity, and optimized weight distribution ensure maneuverability in tight spaces with small steering angles. Operators may drive in any position, including at full height, providing superior productivity.

The IM Series scissors ensure the maximum capacity in both the platform and on the manual deck extension. They offer traction and stability at maximum height, even with two workers on the fully extended platform.

### PRODUCT RANGE

[SERIES IM 4752](#)

[SERIES IM 4746](#)

[SERIES IM 3546](#)

[SERIES IM 3540](#)

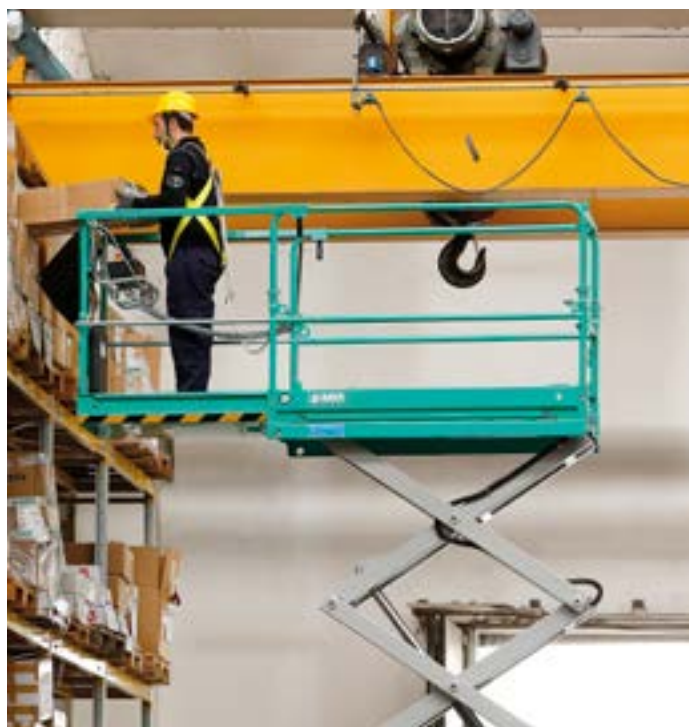
[SERIES IM 3230](#)

### STANDARD EQUIPMENT

- Electric front wheel drive motors
- Negative electromagnetic parking brakes with electric disengagement
- 90° steering
- Manual deck extension (holds two people)
- Manual emergency lowering device
- Cylinder holding valve
- Heavy duty traction batteries
- Battery charger with automatic switch-off
- Audible motion alarm, horn, hour meter
- Tilt meter with motion cut out and alarms
- Mechanical wheel drive release for emergency hauling
- Cushioned non-marking tires
- Electrical scissor protection
- Pothole protection
- **Battery control system with low-voltage cut-out protection**
- Fast action foldable railings
- Overload sensor
- CE & EN280 / ANSI 92.20 approved
- AC power to platform
- Flashing beacon
- Proportional controls with diagnostics

## UNMATCHED PLATFORM SIZE & EXTENSION

The remarkable size and length of the platform and the extension provides increased performance. Support multiple workers and tools, extending further than competitive scissor lifts.



The **SERIES IM** scissor lifts are the ideal solution in the cases requiring:

- **Extended upward and outward reaching**
- **High productivity - multiple workers**
- **Hard-to-reach spaces**
- **Indoor use** - industrial logistics, maintenance, construction - plumbing, electrical, and hydraulic installation



## PERFORMANCE VERSATILITY

Work and drive safely from any position, including full height. Offering 3 speeds to maximize performance.

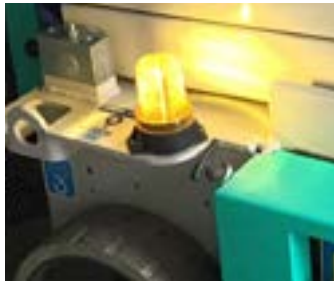
## CE - EN280 & ANSI A92.20 COMPLIANCE

Every IM Series Scissor Model conforms to the European Standard safety requirements directed by the EN280, and the American National Standards Institute (ANSI) standards - receiving the EN280 marking and ANSI 92.20 approval.



## UNMATCHED SAFETY FEATURES

Every IM Series Scissor Model is built for operator safety and includes multiple safety features such as; an Tilt meter with motion cut out and alarms, an overload sensor, a flashing beacon, and a manual emergency lowering device.



## ONE-HAND INTUITIVE CONTROL

Sturdy, simple and intuitive control box on the platform allows for a smooth operation. The control box is also removable for ground control operations.



## LONGER RUNTIME

Securely protected high capacity batteries and the electric front-wheel-drive motor boosts your productivity with time - and longer runtimes.



## POTHOLE PROTECTION

Every IM Series Scissor Model provides a pothole protective undercarriage to stabilize the scissor and protect the operator. The cushioned non-marking tires continue to roll without interruption over potholes.



## SUPERIOR MOBILITY

Narrow platforms and foldable guardrails allow for easy access through standard doorways and narrow aisles.



## EXCEPTIONAL ACCESSIBILITY

Designed with full 90° steering capability, to move easily in tight spaces.



## FOLDING GUARDRAILS

All IM Series Scissors offer foldable guardrails which allows for transportation and easy access.



## NARROW FRAME & PLATFORM

Not only are all IM Series Scissors compact and narrow for maximum mobility, the undercarriages offer a protective metal cover to stop debris from lodging and slowing operation.

# ELECTRIC SCISSOR LIFTS

## Series IM 32

### STANDARD EQUIPMENT

- Electric traction on the front wheels
- Negative electromagnetic parking brakes with electric disengagement
- 90° wheel steering
- Manual deck extension of 39½"
- Manual emergency lowering
- Non-return valve on lifting cylinders
- Traction batteries 24V-185Ah (c5)
- Battery charger with automatic cut-off
- All movement alarm, horn, hour meter
- Tilt meter with motion cut-out and alarm
- Mechanical release for emergency hauling
- Solid rubber non-marking tires
- Electric scissor protection
- Pot Hole protection
- Battery level control with low voltage protection
- Foldable guardrails
- Overload sensor
- CE & EN280 / ANSI 92.20 approved
- AC power to platform
- Flashing beacon
- Proportional controls with diagnostics



Standard hydraulic power pack



Manual deck extension of 39½"

### OPTIONAL EQUIPMENT

- 120 V cable with plug, socket and safety cut-out
- Kit for additional flashing beacon
- Compressed air line at the platform
- Gel battery IM 32 series



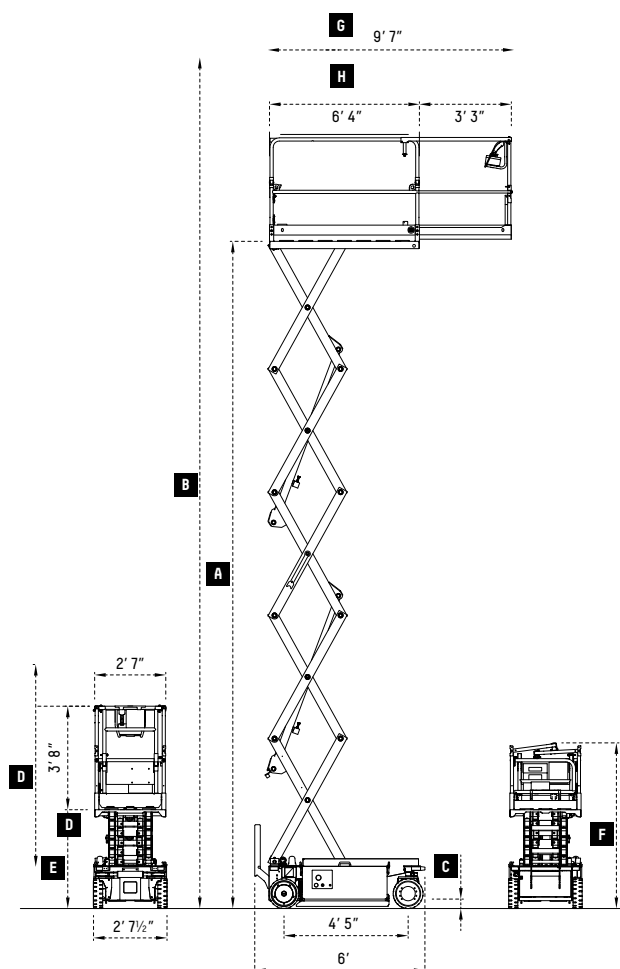
## INDOOR USE



Foldable guardrails allow for easy access through standard doorways



Manual deck extension of 39-1/2" provides extra reach and work space for two people. Both people can operate safely on the extended deck



### IM 32

### IM 3230 E (7380)

|  | US      |            | Metric  |           |
|--|---------|------------|---------|-----------|
| A Platform Height                          | ft      | 23' 7½"    | mm      | 7200      |
| B Working Height                           | ft      | 30' 2"     | mm      | 9200      |
| C (Pot-hole raised/lowered)                | inch    | 3.54" / 1" | mm      | 90/22     |
| D Height Stowed                            | ft      | 7' 2"      | mm      | 2200      |
| E Height (ground to platform bottom)       | ft      | 3' 6"      | mm      | 1080      |
| F Height Storage (with guardrails)         | ft      | 5' 11"     | mm      | 1800      |
| G Platform length - extended               | ft      | 9' - 7"    | mm      | 2630      |
| H Platform length - outside                | ft      | 6' - 4"    | mm      | 1630      |
| Capacity for indoor use / number of people | lb / #  | 510/2      | kg / #  | 231/2     |
| Electric drive motors                      | V / HP  | 24/3.2     | V / kW  | 24/2.4    |
| Lifting power pack - hydraulic type        | V / HP  | 24/2.8     | V / kW  | 24/2.1    |
| Lifting / Lowering time (loaded)           | sec     | 36/35      | sec     | 36/35     |
| Battery (traction battery)                 | V / Ah  | 24/185     | V / Ah  | 24/185    |
| Battery charger                            | V / A   | 24/20A     | V / A   | 24/20A    |
| Hydraulic tank capacity                    | gal     | 1.84       | l       | 7         |
| Drive speed                                | mp / h  | 2.5        | km / h  | 4         |
| Safety traction                            | mp / h  | 0.4        | km / h  | 0.6       |
| Gradeability                               | %       | 25         | %       | 25        |
| Internal steering radius                   | ft      | 0          | m       | 0         |
| External steering radius                   | ft      | 5' 7"      | m       | 1.7       |
| Tire size (wheel dimension)                | inch    | 13" x 4"   | mm      | 325 x 100 |
| Wheel type                                 | cushion |            | cushion |           |
| Max side/longitudinal tilt angle           | degrees | 1.5 / 2.5  | degrees | 1.5 / 2.5 |
| Total weight                               | lb      | 4045       | kg      | 1835      |

## ELECTRIC SCISSOR LIFTS

# Series IM 35



32' (10 m)  
platform height

IM 3540



39' (12 m)  
platform height

IM 3546



4' 3"



Standard manual emergency  
lowering device



Standard negative electromagnetic  
parking brakes with electric  
disengagement

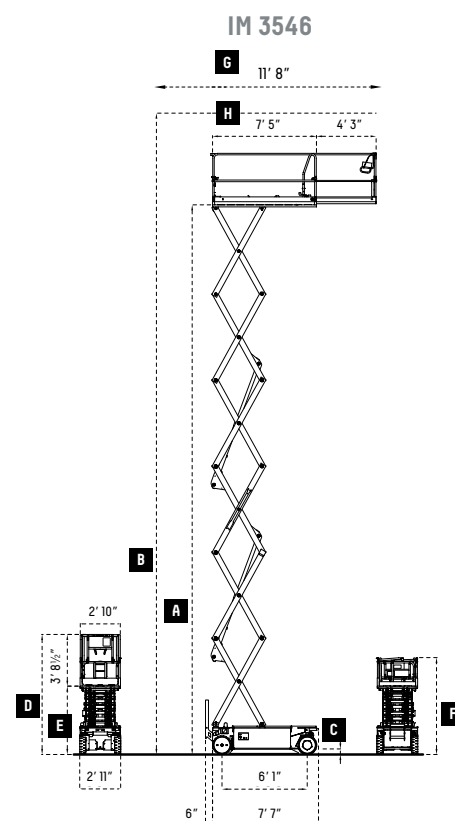
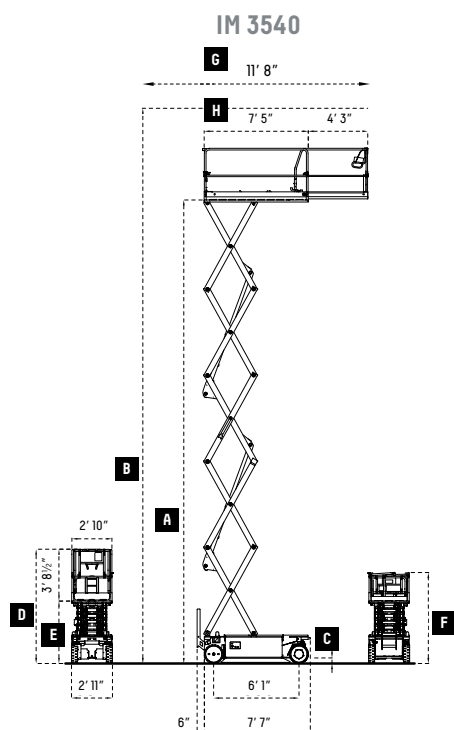
### OPTIONAL EQUIPMENT

- 120 V cable with plug, socket and safety cut-out
- Gel battery IM 35 series
- Additional flashing beacon kit
- Compressed air line

## INDOOR USE



New design of the chassis allows easy cleaning and ensures protection to the components



### IM 35

### IM 3540 E (10090)

### IM 3546 E (12090)

|  | US      |            | Metric  |           | US      |            | Metric  |           |
|--|---------|------------|---------|-----------|---------|------------|---------|-----------|
| A Platform Height                          | ft      | 32' 9 1/2" | mm      | 10000     | ft      | 39' 4 1/2" | mm      | 12000     |
| B Working Height                           | ft      | 39' 4 1/2" | mm      | 12000     | ft      | 45' 11"    | mm      | 14000     |
| C (Pot-hole raised/lowered)                | inch    | 4.84 / 1   | mm      | 123 / 24  | inch    | 4.84 / 1   | mm      | 123 / 24  |
| D Height Stowed                            | ft      | 8' 2"      | mm      | 2492      | ft      | 8' 7"      | mm      | 2619      |
| E Height (ground to platform bottom)       | ft      | 4' 5 1/2"  | mm      | 1362      | ft      | 4' 10 1/2" | mm      | 1489      |
| F Height Storage (with guardrails)         | ft      | 6' 6"      | mm      | 1985      | ft      | 6' 11"     | mm      | 2112      |
| G Platform length - extended               | ft      | 11' 8"     | mm      | 3570      | ft      | 11' 8"     | mm      | 3570      |
| H Platform length - outside                | ft      | 7' 5"      | mm      | 2270      | ft      | 7' 5"      | mm      | 2270      |
| Capacity for indoor use / number of people | lb / #  | 660 / 3    | kg / #  | 300 / 3   | lb / #  | 510 / 2    | kg / #  | 230 / 2   |
| Electric drive motors                      | V / HP  | 24 / 4.0   | V / kW  | 24 / 3.0  | V / HP  | 24 / 5.3   | V / kW  | 24 / 4.0  |
| Lifting power pack - hydraulic type        | V / HP  | 24 / 4.0   | V / kW  | 24 / 3.0  | V / HP  | 24 / 5.3   | V / kW  | 24 / 4.0  |
| Lifting / Lowering time (loaded)           | sec     | 70 / 45    | sec     | 70 / 45   | sec     | 73 / 55    | sec     | 73 / 55   |
| Battery (traction battery)                 | V / Ah  | 24 / 250   | V / Ah  | 24 / 250  | V / Ah  | 24 / 300   | V / Ah  | 24 / 300  |
| Battery charger                            | V / A   | 24 / 30A   | V / A   | 24 / 30A  | V / A   | 24 / 30A   | V / A   | 24 / 30A  |
| Hydraulic tank capacity                    | gal     | 4.9        | l       | 17        | gal     | 4.9        | l       | 17        |
| Drive speed                                | mph     | 2.5        | km / h  | 4         | mph     | 2.5        | km / h  | 4         |
| Safety traction                            | mph     | 0.4        | km / h  | 0.6       | mph     | 0.4        | km / h  | 0.6       |
| Gradeability                               | %       | 25         | %       | 25        | %       | 25         | %       | 25        |
| Internal steering radius                   | ft      | 0          | m       | 0         | ft      | 0          | m       | 0         |
| External steering radius                   | ft      | 7' 2 1/2"  | m       | 2.22      | ft      | 7' 2 1/2"  | m       | 2.22      |
| Tire size (wheel dimension)                | inch    | 16" x 5"   | mm      | 410 x 130 | inch    | 16" x 5"   | mm      | 410 x 130 |
| Wheel type                                 | cushion |            | cushion |           | cushion |            | cushion |           |
| Max side/longitudinal tilt angle           | degrees | 1.5 / 2.5  | degrees | 1.5 / 2.5 | degrees | 1.2 / 2.5  | degrees | 1.2 / 2.5 |
| Total weight                               | lb      | 6250       | kg      | 2835      | lb      | 7110       | kg      | 3225      |



## ELECTRIC SCISSOR LIFTS

# Series IM 47



39' (12 m)  
platform height

IM 4746



45'-7" (13.9 m)  
platform height

IM 4752



Standard AC power  
to the platform



Standard cushioned  
non-marking tires

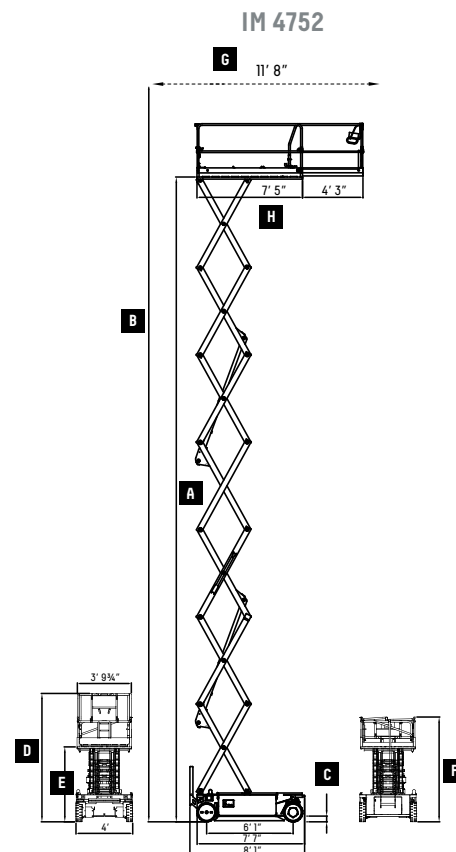
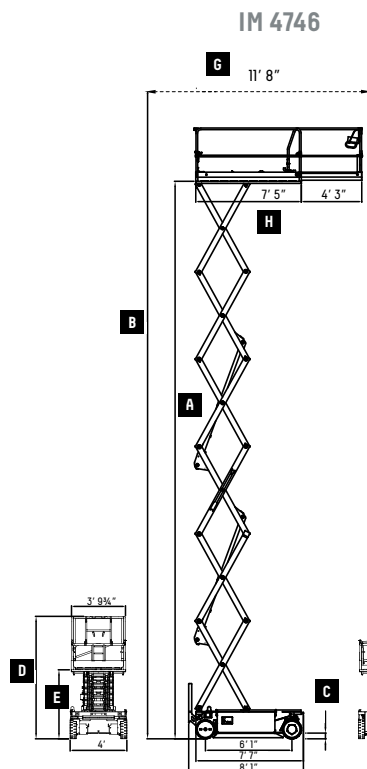
### OPTIONAL EQUIPMENT

- 120 V cable with plug, socket and safety cut-out
- Gel battery IM 47
- 2° rotating beacon kit

## INDOOR USE



New design of the AWP and the scissor pack

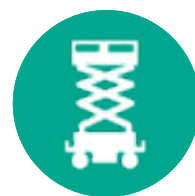


### IM 47

### IM 4746 E (12122)

### IM 4752 E (14122)

|   | US      |            |         |           | Metric  |           |         |           |
|---|---------|------------|---------|-----------|---------|-----------|---------|-----------|
| <b>A</b> Platform Height                    | ft      | 39' 4"     | mm      | 12000     | ft      | 45' 7"    | mm      | 13900     |
| <b>B</b> Working Height                     | ft      | 45' 11"    | mm      | 14000     | ft      | 52' 2"    | mm      | 15900     |
| <b>C</b> (Pot-hole raised/lowered)          | inch    | 4.72 / 1   | mm      | 120/22    | inch    | 4.72 / 1  | mm      | 120/22    |
| <b>D</b> Height Stowed                      | inch    | 8' 7"      | mm      | 2619      | inch    | 9         | mm      | 2746      |
| <b>E</b> Height (ground to platform bottom) | ft      | 4' 10 1/2" | mm      | 1489      | ft      | 5' 3 1/2" | mm      | 1616      |
| <b>F</b> Height Storage (with guardrails)   | ft      | 6' 11"     | mm      | 2112      | ft      | 7' 4"     | mm      | 2239      |
| <b>G</b> Platform length - extended         | ft      | 11' 8"     | mm      | 3570      | ft      | 11' 8"    | mm      | 3570      |
| <b>H</b> Platform length - outside          | ft      | 7' 5"      | mm      | 2270      | ft      | 7' 5"     | mm      | 2270      |
| Capacity for indoor use / number of people  | lb      | 770 / 3    | kg / #  | 350 / 3   | lb      | 550 / 2   | kg / #  | 250 / 2   |
| Electric drive motors                       | V / HP  | 24 / 4.0   | V / kW  | 24 / 3.0  | V / HP  | 24 / 4.0  | V / kW  | 24 / 3.0  |
| Lifting power pack - hydraulic type         | V / HP  | 24 / 4.0   | V / kW  | 24 / 3.0  | V / HP  | 24 / 5.3  | V / kW  | 24 / 4.0  |
| Lifting / Lowering time (loaded)            | sec     | 68 / 55    | sec     | 68 / 55   | sec     | 68 / 67   | sec     | 68 / 67   |
| Battery (traction battery)                  | V / Ah  | 24/300     | V / Ah  | 24/300    | V / Ah  | 24/300    | V / Ah  | 24/300    |
| Battery charger                             | V / A   | 24 / 30A   | V / A   | 24 / 30A  | V / A   | 24 / 30A  | V / A   | 24 / 30A  |
| Hydraulic tank capacity                     | gal     | 4.9        | l       | 17        | gal     | 4.9       | l       | 17        |
| Drive speed                                 | mph     | 2.5        | km / h  | 4         | mph     | 2.5       | km / h  | 4         |
| Safety traction                             | mph     | 0.4        | km / h  | 0.6       | mph     | 0.4       | km / h  | 0.6       |
| Gradeability                                | %       | 25         | %       | 25        | %       | 25        | %       | 25        |
| Internal steering radius                    | ft      | 0          | m       | 0         | ft      | 0         | m       | 0         |
| External steering radius                    | ft      | 92 1/2"    | m       | 2.35      | ft      | 92 1/2"   | m       | 2.35      |
| Tire size (wheel dimension)                 | inch    | 16" x 5"   | mm      | 410 x 130 | inch    | 16" x 5"  | mm      | 410 x 130 |
| Wheel type                                  | cushion |            | cushion |           | cushion |           | cushion |           |
| Max side/longitudinal tilt angle            | degrees | 1.8 / 3.0  | degrees | 1.8 / 3.0 | degrees | 1.2 / 2.0 | degrees | 1.2 / 2.0 |
| Total weight                                | lb      | 6430       | kg      | 2915      | lb      | 6610      | kg      | 3000      |



# DIESEL-ELECTRIC

## SERIES IM ROUGH TERRAIN SCISSOR LIFTS

IMER's Diesel-Electric Scissor Lifts lead the industry with innovative technologies as a direct result of years of experience, concentrated research, and a goal to provide superior products that deliver unparalleled productivity and safety.

The IMER IM RTE Series are customizable with diesel, electric or diesel-electric engines. Ideal for any terrain and the perfect solution for outdoor and indoor use.

Engineered to allow operators to drive in any position, including at full height, providing superior productivity.

The IM Series scissors ensure the maximum capacity in both the platform and on the manual deck extension. They offer traction and stability at maximum height, even with up to four workers on the fully extended platform.

Traction allowed at max. height and with full rated load. Hydraulic transmission 2WD. Ideal for any terrain. For outdoor and indoor use

### PRODUCT RANGE

#### SERIES IM 7049RTE

#### STANDARD EQUIPMENT

- Front driving and steering wheels
- Hydraulic transmission 2WD
- Negative parking brakes
- Mechanical wheel drive disengagement for emergency hauling
- Manual emergency lowering device
- Proportional controls
- Diagnostic system
- Hour meter
- Cylinder's holding valves
- Manual deck extension 1.5 m
- Inclinator with motion cut out and alarms
- Overload sensor
- Audible motion alarm
- Electric scissor protection
- Rough terrain tires extra grip 720x245 mm
- Removable control box
- Fold down railings
- Flashing beacon
- 220 V cable with plug socket and safety cut-out



## UNMATCHED PLATFORM SIZE & EXTENSION

The remarkable size and length of the platform and the extension provides increased performance. Support multiple workers and tools, extending further than competitive scissor lifts.



## PERFORMANCE VERSATILITY

Work and drive safely at maximum height with no capacity restrictions



## AUTOMATED TECHNOLOGY

Automatic hydraulic stabilization system

## DIESEL-ELECTRIC SCISSOR LIFTS

# Series IM 70

### DIESEL EQUIPMENT

- Water cooled Diesel engine
- Start-up battery 12V 66Ah
- Start-up battery alternator
- Black rough terrain tires extra grip 28" X 9" (½720x245 mm)

### ELECTRIC EQUIPMENT

- Powerpack 48V-7.2kW
- Traction Battery 48V 300Ah
- Battery charger with automatic switch off
- Battery control system with low voltage cut-out protection
- Battery cut-out handle
- Rough terrain tires extra grip non-marking 28" X 9" (½720x245 mm)

### DIESEL-ELECTRIC EQUIPMENT

- Water cooled Diesel engine
- Start-up battery 12V 66Ah
- Start-up battery alternator
- Powerpack 48V-7.2kW
- Traction Battery 48V 300Ah
- Battery charger with automatic switch off
- Battery control system with low voltage cut-out protection
- Battery cut-out handle
- Rough terrain tires extra grip non-marking 28" X 9" (½720x245 mm)



IM 7049



Plug unit for battery charger and power supply on basket with battery level indicator (E and DE versions)



Simple and intuitive control box that can be removed from the basket for loading / unloading the machine



Reduced steering angle - 70° wheel inclination

### OPTIONAL EQUIPMENT

- Non marking tires
- Black tires
- Battery kit 400 Ah (IM 7049 E/DE)
- Battery kit 525 Ah (IM 70490 E)

### CUSTOM EQUIPMENT

#### SPECIAL ORDER

- Hydraulic transmission 4WD
- Oscillating front axle
- Automatic hydraulic levelling outriggers

## OUTDOOR AND INDOOR USE

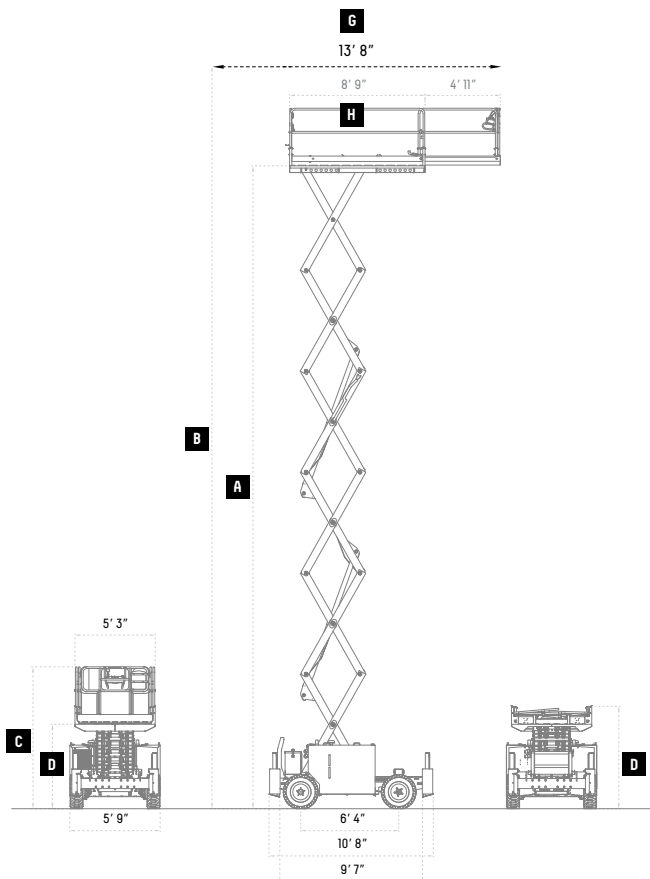


4 person unit authorized  
for indoor and outdoor use (stabilized)



Manual deck extension of 59" (1.5 m)  
for a total length of 13' 8" (4.2 m)

### IM 7049

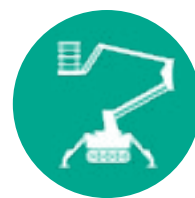


### IM 7049

### IM 7049 RTE (13180 E)

|  | US                  |              | Metric              |               |
|--|---------------------|--------------|---------------------|---------------|
| A Platform Height                              | ft                  | 42'          | mm                  | 12800         |
| B Working Height                               | ft                  | 47'          | mm                  | 14800         |
| C (Pot-hole raised/lowered)                    | ft                  | 9' 6"        | mm                  | 2944          |
| D Height Stowed                                | ft                  | 5' 6"        | mm                  | 1698          |
| E Height (ground to platform bottom)           | ft                  | 6' 9"        | mm                  | 2056          |
| F Height Storage (with guardrails)             | ft                  | --           | mm                  | --            |
| G Platform length - extended                   | ft                  | 13' 8"       | mm                  | 4200          |
| H Platform length - outside                    | ft                  | 8' 9"        | mm                  | 2700          |
| Capacity (stabilized)                          | lb / #              | 882          | kg / #              | 400 (500) / 4 |
| Min. height from chassis to ground             | inch                | 12           | mm                  | 300           |
| Electric drive motors                          | V / HP              | --           | kW                  | 7.2           |
| Lifting power pack - hydraulic type            | V / HP              | --           | V / kW              | 24/2.1        |
| Lifting / Lowering time (loaded)               | sec                 | 36/35        | sec                 | 36/35         |
| Battery (traction battery)                     | V / A               | 48/30A       | V / A               | 48/30A        |
| Battery charger                                | V / A               | 48/30A       | V / A               | 48/30A        |
| Hydraulic tank capacity                        | gal                 | 14.8         | l                   | 56            |
| Drive speed                                    | mp / h              | 2.5          | km / h              | 4             |
| Safety traction                                | mp / h              | 0.4          | km / h              | 0.6           |
| Internal steering radius                       | ft                  | 5' 7"        | m                   | 1.94          |
| Gradeability                                   | 2WD: 25% / 4WD: 35% |              | 2WD: 25% / 4WD: 35% |               |
| External steering radius (without stabilizers) | inch                | --           | m                   | 4.83 (4.52)   |
| Tire size (wheel dimension)                    | inch                | 28" x 9 1/4" | m                   | 720 x 245     |
| Max side/longitudinal tilt angle               | degrees             | 1.5 / 2.5    | degrees             | 2.0 / 2.5     |
| Total weight (without stabilizers)             | lb                  | 10360        | kg                  | 4700 (4750)   |





# TRACK DRIVEN

## SERIES IM R ARTICULATED & TELESCOPIC LIFTS

IMER was one of the first companies to introduce tracked aerial units to the international market years ago.

In compliance with strict European safety standards, the IM R Series was engineered with safety features that far exceeded Western regulations of that time.

Today, with an increased focus on US safety codes, IMER is introducing two models to the North American marketplace that were engineered and built in compliance with European and US safety standards.

While the IM R Series was first engineered with safety in mind, user experience, maneuverability, and versatility were also a priority.

The IM R Series is an easy to operate, compact and light-weight solution for maximum clearance and versatility. The reduced size of the units and portable remote controls ensure maneuverability in tight spaces while providing added operator safety. In addition, track-driven capabilities offer maximum versatility for both outdoor and indoor applications.

Like IMER's scissor lift series, the IM R 19 and IM R 13 T share innovative technologies and a commonality of parts, which simplifies maintenance and improves parts costs and accessibility.

### PRODUCT RANGE

#### SERIES IM R 19

#### SERIES IM R 13 T

### STANDARD EQUIPMENT

- Automatic outrigger leveling system
- 360° rotation (not continuous)
- Emergency hand pump
- Cylinder holding valve
- Hour meter
- Load and tip detection sensor
- Load cell
- Hydraulic jib
- Rubber tracks
- Electric motor for indoor use
- Air / Water outlet in the platform basket
- AC power to platform
- Removable wired control box
- Three travel speeds
- Wired control
- Remote battery charger
- Removable basket with 1 pin detach
- Overload sensor
- 120V battery charger
- Proportional controls with diagnostics
- GX390 Honda Engine
- Hydraulically adjustable track width (IM R 19 Only)

## UNMATCHED ACCESSIBILITY

The IM R tracked Series allows you to go where no towable lift can go and easily access those hard-to-reach areas. With a remarkable extension height, side outreach and 360° rotation, the IM R Series offers unmatched accessibility as well.



The **SERIES IM R** articulated & telescopic tracked platforms are the ideal solution in the cases requiring:

- **Hard-to-reach outdoor spaces**  
*(where towable units cannot access)*
- **Indoor spaces with limited access**  
*(doorways, isles and staircases)*
- **Outdoor use** - arborists, building maintenance, construction - signage, electrical, painting
- **Indoor use** - building maintenance, construction - plumbing, electrical, and hydraulic installation



## FAST & SECURE LEVELING

Automatic outrigger leveling system for quick set up and peace of mind.



## EASY USER EXPERIENCE

A user-friendly control panel. The easily removable remote controlled unit allows for more space available in the basket and navigating from the ground.



## EASY ACCESS

In addition to the removable control box in the basket, the IM R Series includes an easy to access ground control panel.

# ATRIUM LIFT

## Series IM R 19

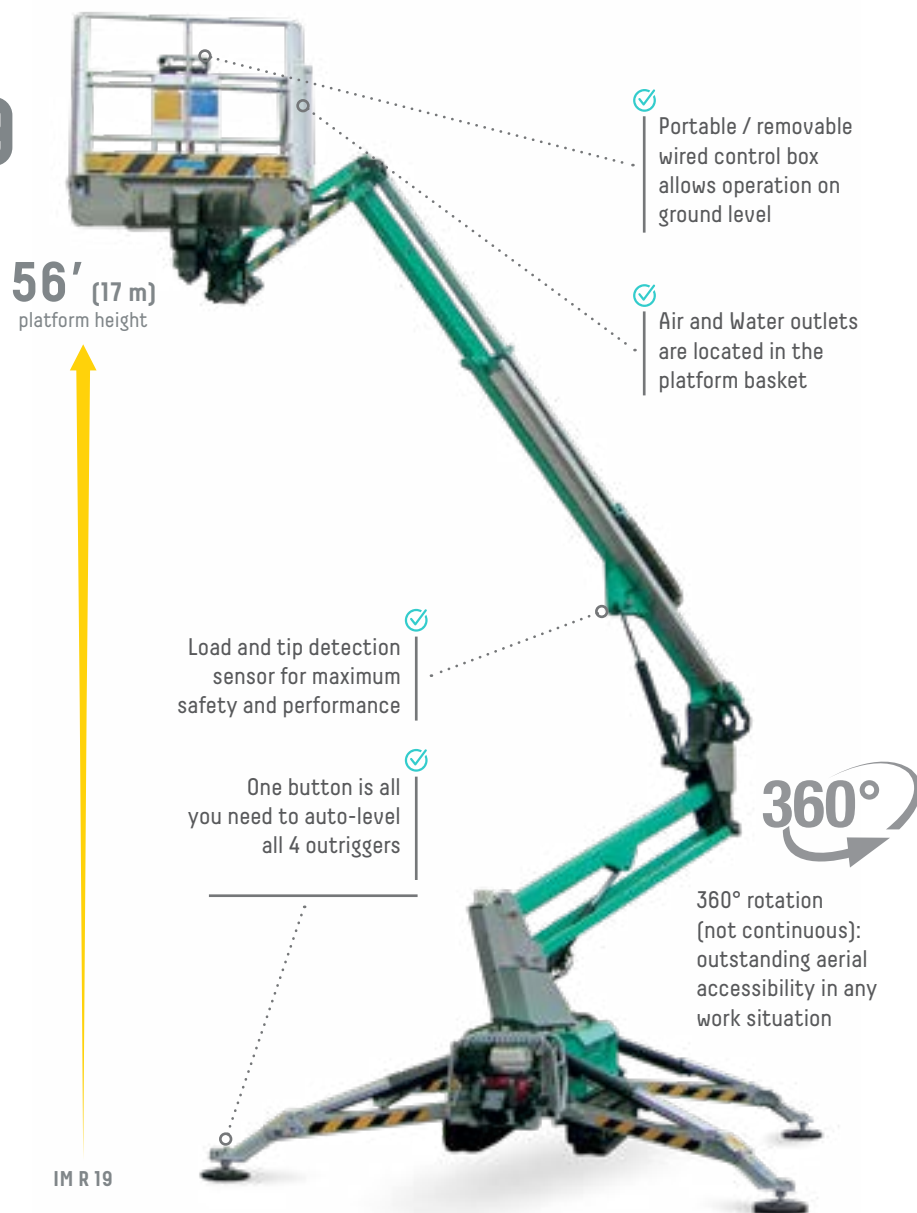
### STANDARD EQUIPMENT

- Automatic outrigger leveling system
- 360° rotation (not continuous)
- Emergency hand pump
- Cylinder holding valve
- Hour meter
- Load and tip detection sensor
- Load cell
- Hydraulic jib
- Rubber tracks
- Electric motor for indoor use
- Air / Water outlet in the platform basket
- AC power to platform
- Removable wired control box
- Three travel speeds
- Wired control
- Remote battery charger
- Removable basket with 1 pin detach
- Overload sensor
- 120V battery charger
- Proportional controls with diagnostics
- GX390 Honda Engine
- Hydraulically adjustable track width
- 12 V emergency pump
- Oversized 14" outrigger pads
- Wireless radio remote control box

### OPTIONAL EQUIPMENT

- Non-marking rubber tracks
- Working light in the platform basket

### OUTDOOR AND INDOOR USE



|  |         | IM R 19                           |        |                                 |  |
|--|---------|-----------------------------------|--------|---------------------------------|--|
|  |         | US                                |        | Metric                          |  |
| Working height   | ft      | 62                                | m      | 19                              |  |
| Platform height  | ft      | 56                                | m      | 17                              |  |
| Side outreach  | ft / lb | 32' / 176 - 28' / 310 - 23' / 510 | m / kg | 9.75 / 80 - 8.5 / 120 - 7 / 227 |  |
| Rotation (not continuous)                              | deg     | 360°                              | deg    | 360°                            |  |
| Basket dimensions                                      | in      | 57" x 28" x 43"                   | mm     | 1448 x 711 x 1092               |  |
| Basket rotation  | deg     | 124°                              | deg    | 124°                            |  |
| Transport length (without basket)                      | ft      | 17' 5" / 15' 2"                   | mm     | 5308 / 4622                     |  |
| Transport width (without basket)                       | ft      | Min 2' 7" / Max 3' 6"             | mm     | Min 787 / Max 1066              |  |
| Height in stowed position (w/ stabilizers in position) | ft      | Min 6' 6" / Max 6' 11"            | mm     | Min 1981 / Max 2108             |  |
| Overall outrigger footprint                            | ft      | 9' 6" x 9' 8"                     | mm     | 2896 x 2946                     |  |
| Stabilizer Load  | ft-lb   | 3930                              | daN    | 1750                            |  |
| Driving speed  | mph     | 0 - 1.24                          | km / h | 0 - 2                           |  |
| Gradeability   | %       | 32                                | %      | 32                              |  |
| Electric pump  | V / HP  | 120 / 1.5                         | V / kW | 120 / 1.125                     |  |
| Max. hydraulic pressure                                | psi     | 3190                              | bar    | 220                             |  |
| Battery  | V/Ah    | 12                                | V/Ah   | 12                              |  |
| Battery charger  | V/A     | 12 / 12                           | V/A    | 12 / 12                         |  |
| Gas motor  |         | Honda GX390 - 11 HP 3600 rpm      |        | Honda GX390 - 11 HP 3600 rpm    |  |
| Machine Weight   | lb      | 5370                              | kg     | 2435                            |  |





Standard emergency hand pump with ease of access and operation.



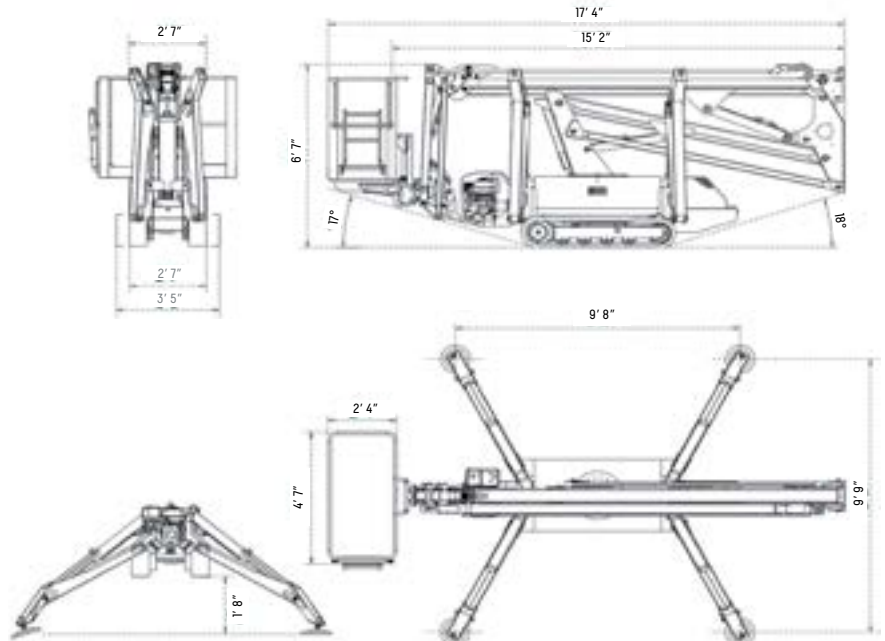
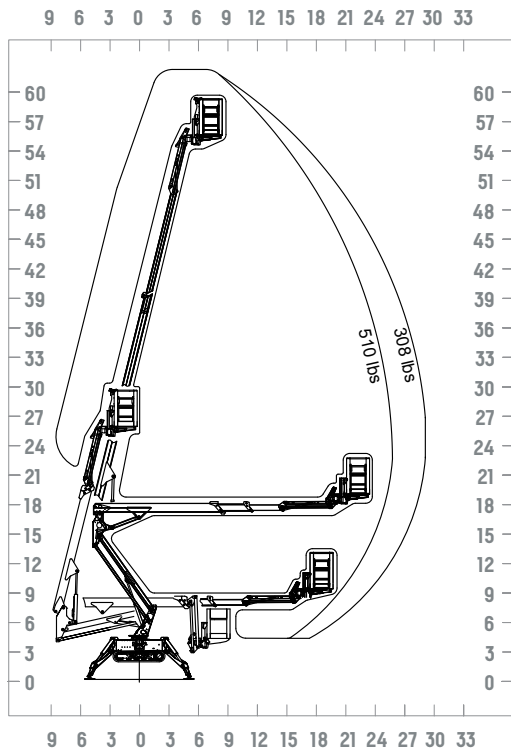
Easily attach or remove the basket with the one-pin mounting system.



Hydraulically adjust the track width for added stability and traction.



The compact dimensions allow you to take the IM R19 almost anywhere!



# ATRIUM LIFT

## Series IM R 13 T

### STANDARD EQUIPMENT

- Automatic outrigger leveling system
- 360° rotation (not continuous)
- Emergency hand pump
- Cylinder holding valve
- Hour meter
- Load and tip detection sensor
- Load cell
- Hydraulic jib
- Rubber tracks
- Electric motor for indoor use
- Air / Water outlet in the platform basket
- AC power to platform
- Removable wired control box
- Three travel speeds
- Wired control
- Remote battery charger
- Removable basket with 1 pin detach
- Overload sensor
- 120V battery charger
- Proportional controls with diagnostics
- GX390 Honda Engine

### OPTIONAL EQUIPMENT

- 12 V emergency pump
- Hydraulically adjustable tracks
- Non-marking rubber tracks
- Wireless radio remote control box
- Working light in the platform basket

Portable / removable  
wired control box  
allows operation on  
ground level

Electro-hydraulic  
controls: efficiency and  
safety for the operators

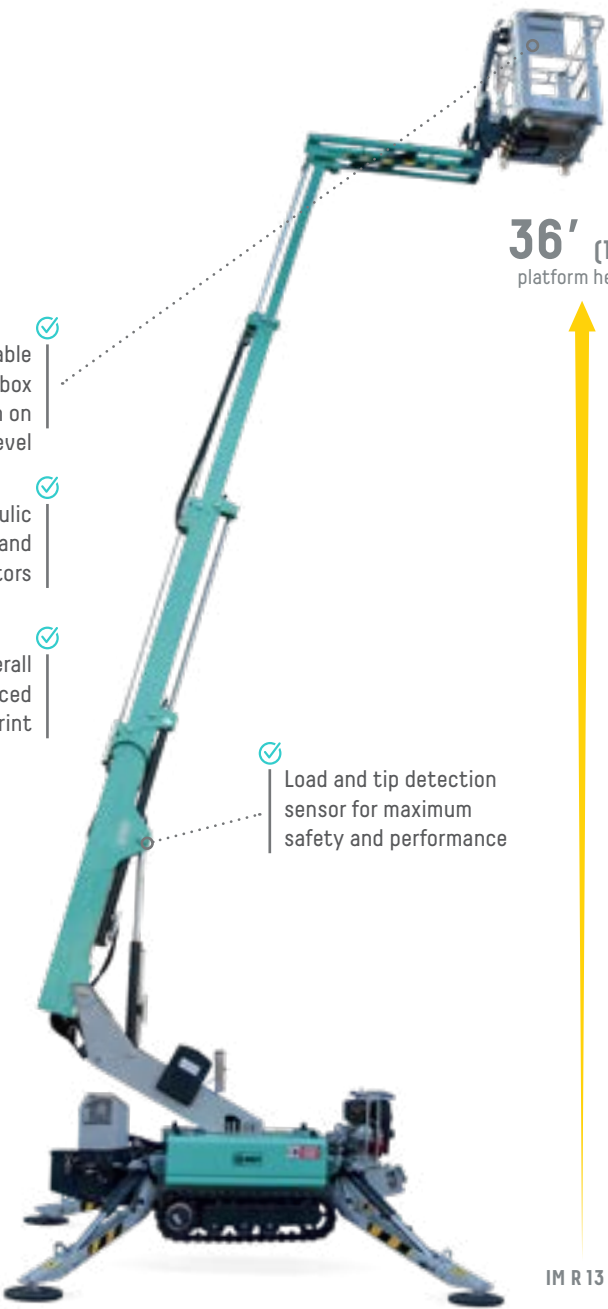
Compact overall  
sizes and reduced  
stabilization footprint

360°

360° rotation  
(not continuous):  
outstanding aerial  
accessibility in any  
work situation

Load and tip detection  
sensor for maximum  
safety and performance

36' (11 m)  
platform height



IM R 13 T

### OUTDOOR AND INDOOR USE

|  | IM R 13 T                    |                          |         |                              |
|--|------------------------------|--------------------------|---------|------------------------------|
|  |                              | US                       |         | Metric                       |
| Working height   | ft                           | 42' 6"                   | m       | 13                           |
| Platform height  | ft                           | 36'                      | m       | 11                           |
| Side outreach  | ft / lb                      | 17' / 510 - 20' 6" / 308 | m / kg  | 5.25 / 230 - 6.3 / 140       |
| Rotation (not continuous)                              | deg                          | 360°                     | deg     | 360°                         |
| Basket dimensions                                      | in                           | 51" x 28" x 43"          | mm      | 1300 x 750 x 1100            |
| Transport length (without basket)                      | ft                           | 12' 4" / 9' 8"           | mm      | 3780 / 3000                  |
| Transport width (without basket)                       | ft                           | 4' 6" / 2' 6"            | mm      | 1300 / 790                   |
| Height in stowed position (w/ stabilizers in position) | ft                           | 6' 6¾"                   | mm      | 2000                         |
| Overall outrigger footprint                            | ft                           | 8' 8" / 9' 2"            | mm      | 2700 x 2800                  |
| Driving speed  | mph                          | .93                      | km/h    | 1.5                          |
| Gradeability   | %                            | 17° (30%)                | deg / % | 17° (30%)                    |
| Platform capacity                                      | lb                           | 510                      | kg      | 230                          |
| Electric motor   | V / HP                       | 230 / 2.95               | V / kW  | 230 / 2.2                    |
| Gas motor  | Honda GX390 - 11 HP 3600 rpm |                          |         | Honda GX390 - 11 HP 3600 rpm |
| Total weight of the machine                            | lb                           | 3296                     | kg      | 1495*                        |

\*1550 kg / 3417 lbs with hydraulically adjustable tracks



Thermal-magnetic switch panel and power line inlet.



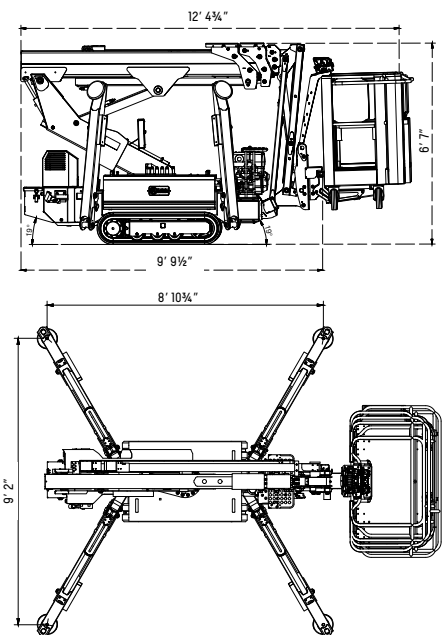
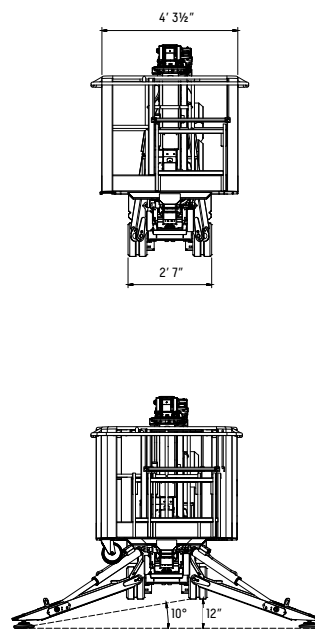
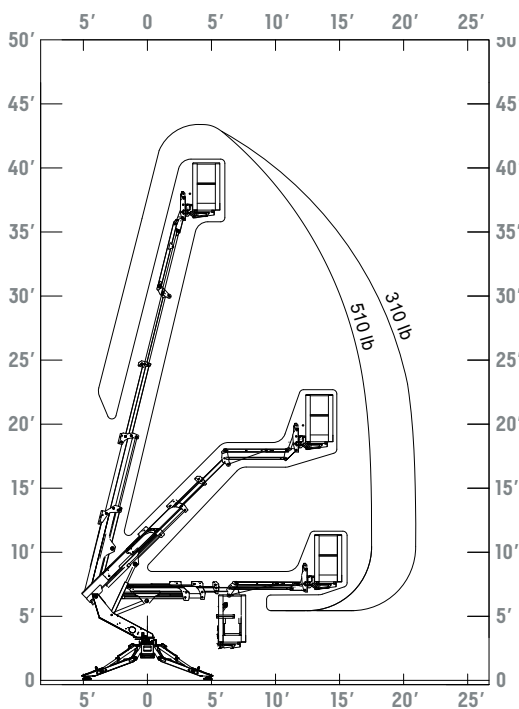
IM R 13 T compact jib assembly hosting both the load sensor and basket rotation system.



Rugged engine guard for improved protection.



Dimensions compactes pour améliorer accessibilité sur tout site de travail.







TOLL FREE: 800.275.5463  
WWW.IMERUSA.COM



TOGETHER WE BUILD

IMER USA, Inc.  
221 West Hampton Place  
Capitol Heights, MD 20743  
Tel. (800) 275-5463 - Fax (301) 336-6687  
[www.imerusa.com](http://www.imerusa.com)



Le Officine Riunite - Udine S.p.A. reserve the right to change the information contained herein without prior notice when they consider it justified. The data and dimensions are therefore not to be considered as binding. The illustrations may include accessories and therefore they could be slightly different from the standard versions of the equipment.

© Copyright by Le Officine Riunite - Udine S.p.A. 2017