

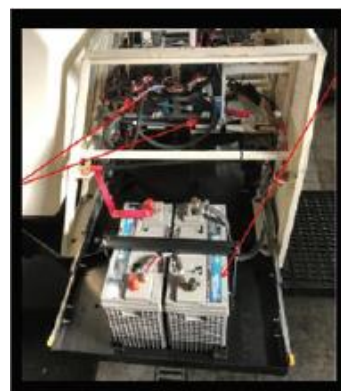
# ***The Electric Buggy***

**BY *1ndy***

**Perfect For Interior Or Other Areas Requiring  
Low Noise & Zero Emissions!**



**ALL NEW EASY  
ACCESS DESIGN!**



- Auburn Gear ETrac drive system
- Uses four 12V Deep Cycle Batteries (48V system)
- Charging requires 110V AC, 20A circuit
- Full charge time approx. 2 hours
- Onboard charger with maintain feature
- Automatic Electromechanical parking brake
- Simple, clean control panel with gauges
- Excellent traction/stability and maneuverability
- Handlebar controls: forward, reverse and dump
- Provides enough power for a normal working day
- 16 cu. ft. (453 L) capacity
- Max load of 2,500 lbs.
- Heavy-duty welded chassis
- Overall length 111"
- Overall width 46"
- Overall height 53"
- Discharge height 7.5"
- Gross weight 1675 lbs
- Forward speed 6 mph
- Able to travel 10.5% (6°) grade loaded

***The Power Buggy LLC***

*Represented by*

**PROUDLY  
MADE IN THE U.S.A.**



**DISTEFANO SALES COMPANY  
9001 EXCHANGE AVENUE  
FRANKLIN PARK, IL 60131  
800.237.0007  
[www.distefanosales.com](http://www.distefanosales.com)**