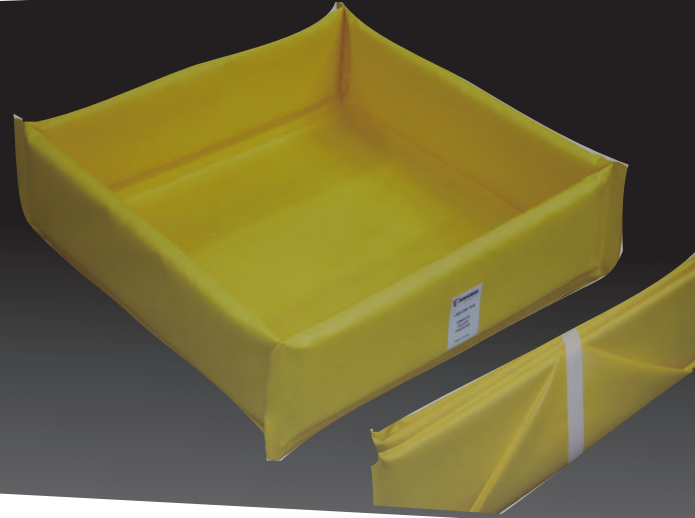


GEAR
PERFORM



SECONDARY CONTAINMENT BERMS PORTABLE & L-ROD

ENVIRONMENTAL PROTECTION.

Our secondary containment berms are an environmental and inexpensive safeguard that is placed under equipment, valves, fittings and trucks to prevent site contamination from leaks and spills. They are used in a variety of applications such as on a worksite, under machinery or during a plant shutdown.

Lightweight, portable and collapses easily for transport.



*Contact our
Gear Specialists
to learn more.*

THE STORY BEHIND THE GEAR

For almost 100 years, Norseman has supported those who do the heavy lifting and hard work. Our advanced protective and performance gear allows the people who rely on us to achieve extraordinary things.

Canada: 905.895.9956 USA: 844.667.7362 norseman.ca

PORTABLE SECONDARY CONTAINMENT BERMS

- Appropriate for smaller secondary containment of wastewater, petroleum products and various chemicals.
- For use under pails, barrels and small portable equipment such as heaters, generators and light stands. Can also be placed under large equipment or pipeline valves to protect the ground from leaks.
- Compact and lightweight for storage and easy transport.
- Berm walls are 6" plank enclosed foam – they can be driven over and will retain their shape.

Product#	Size	Wall	Max. Capacity		Fabric Description
			Gallons	Liters	
412236	2' x 2'	6" Plank	11	41.5	Hyprene XC - Yellow
412239	2' x 4'	6" Plank	22	83	Hyprene XC - Yellow
412240	3' x 3'	6" Plank	25	94.5	Hyprene XC - Yellow
412241	4' x 4'	6" Plank	45	170	Hyprene XC - Yellow
412242	4' x 6'	6" Plank	67	253.5	Hyprene XC - Yellow
412243	6' x 6'	6" Plank	101	382	Hyprene XC - Yellow
412244	6' x 8'	6" Plank	135	511	Hyprene XC - Yellow



L-ROD SECONDARY CONTAINMENT BERMS



- Appropriate for larger areas where secondary containment of waste water, petroleum products and various chemicals is required.
- For use under larger equipment and vehicles to protect the ground from leaks and spills.
- 12" berm walls are supported with metal L-shaped flat bar brackets.
- Collapsible for compact storage and easy transport.

Product#	Size	Wall	Max. Capacity		Fabric Description
			Gallons	Liters	
412246	8' x 8'	12" L-Bracket	359	1359	Hyprene XC - Yellow
412247	10' x 10'	12" L-Bracket	561	2123	Hyprene XC - Yellow
412248	12' x 12'	12" L-Bracket	808	3058	Hyprene XC - Yellow

HYPRENE™ XC FABRIC SPECIFICATIONS

- Fabric passes fire retardant testing NFPA701-2010, Test Methods 1 and 2.
- Cold crack rated to -67°F (-55°C).
- Chemical, oil, fuel and abrasion resistant.

