



GEAR²
PERFORM²

2019
USA CATALOG

**THE STORY BEHIND
THE GEAR**

For almost 100 years, Norseman has supported those who do the heavy lifting and hard work. Our advanced protective and performance gear allows the people who rely on us to achieve extraordinary things.



Available Diameters: 12" and 16"
Available Lengths: 12' or 25'
Temp Rating: -65°F to 500°F

ARCTIC HELIX™ HT (HIGH TEMP)

For top of the line performance, Norseman **Arctic Helix™ HT** heat duct features advanced Silicone Coated Fiberglass fabric for the highest degree of durability and flexibility, plus the industry's first stainless steel collar for a superior connection.

No matter how difficult the job or conditions, Norseman Arctic Helix™ HT is up to the challenge.

- › Top-grade Silicone-Coated Fiberglass fabric eliminates drying and cracking – for ducting that outlasts the rest
- › Fabric is top and bottom-coated for added protection
- › Wind, water, mold, mildew and fire resistant and odor-free
- › Cold-weather rated, FR Santoprene extra-strength wear-strip provides unmatched abrasion resistance
- › Unique integrated compression straps that assist in carrying and minimizing storage space
- › Industry's first stainless steel collar to help prevent rust buildup
- › Available in multiple collars for different connections
- › Passes FR testing to NFPA - 701
- › Can be used in both horizontal and vertical applications



Available Diameters: 12" and 16"
Available Lengths: 25' on all plus 12' on 12"
Temp Rating: -60°F to 375°F

ARCTIC DURASHIELD PLUS

Leading cold-weather performance your crews can count on in extremely challenging conditions, with advanced double-sided, flame-resistant Urethane Coated Polyester fabric for maximum durability and output.

- › Double-sided Urethane Coated Polyester fabric for maximum durability and additional heat protection at entry with a 500°F-rated fabric lead
- › Wind, water, mold, mildew and fire resistant and odor-free
- › Unique integrated compression straps that assist in carrying and minimizing storage space
- › Available in multiple collar configurations for different connections
- › Passes FR testing to NFPA - 701
- › Can be used in both horizontal and vertical applications



Available Diameters: 12", 16", 20" and 24"
Available Lengths: 25' on all plus 12' on 12"
Temp Rating: -60°F to 325°F

ARCTIC DURASHIELD

Like the Arctic DuraShield Plus, Arctic DuraShield is dependable, high performance heat gear with advanced double-sided, flame-resistant Urethane Coated Polyester fabric to optimize comfort and efficiency.

- › Double-sided Urethane Coated Polyester for maximum durability
- › Wind, water, mold, mildew and fire resistant and odor-free
- › Unique integrated compression straps that assist in carrying and minimizing storage space
- › Available in multiple collar configurations for different connections
- › Passes FR testing to NFPA - 701
- › Can be used in both horizontal and vertical applications
- › Available in Safety Orange for added jobsite visibility



Available Diameters: 12" and 16"
Available Lengths: 12' or 25'
Temp Rating: Continuous use to 350°F

ARCTIC ECONORUSH

A reliable, efficient solution for delivering temporary heat for number of different applications.

- › Partially lined on entry end with Silicone fabric rated at 500°F
- › Wind, water, mold, mildew and fire resistant and odor-free
- › Unique integrated compression straps that assist in carrying and minimizing storage space
- › Safety Orange for added jobsite visibility
- › Available with Pin Lock collars on the connection end
- › Passes FR testing to NFPA - 701

Note: product cannot be used in vertical applications



Available Diameters: 12", 14", 16", 18" and 20"
Available Lengths: 25' standard, Belted Cuff models also available in 15' lengths (12", 16" and 20")
Temp Rating: -22°F to 200°F

AERO AIRSTREAM™

Norseman's **Aero Airstream™** is the signature A/C & ventilation duct. It has been engineered with superior fabrics and unique features for durability and maximum efficiency.

- › Engineered using an advanced Woven Coated Polyethylene (PE) fabric which provides superior tear resistance
- › Resistant to UV rays - will stay white, bright and professional
- › Wind, water, mold, mildew and fire resistant and odor-free
- › Made with a wire spiral helix, providing greater flexibility and preventing kinks
- › Waxier finish helps maintain a lower energy coefficient, allowing for a steadier, more even air flow for maximum performance
- › Unique integrated compression straps that assist in carrying and minimizing storage space
- › Built-in suspension tabs to fasten the ducting from above
- › Available in multiple collars for different connections - Wire Ring (WR), Belted Cuff (BC) or Gear Clamp (GC)
- › Passes FR testing to NFPA - 701
- › All white. Some sizes available in yellow
- › Ideal for large tents, temporary structures and more

PORTABLE A/C EXHAUST DUCT

Coming soon is Norseman's new indoor **Portable A/C Exhaust Duct**. It is crafted with a lightweight, insulated fabric that is easy to install and handle.

This exhaust duct can be paired with Norseman's Ceiling Tile with built-in flange for quicker, more efficient installation.

Note: Coming soon!

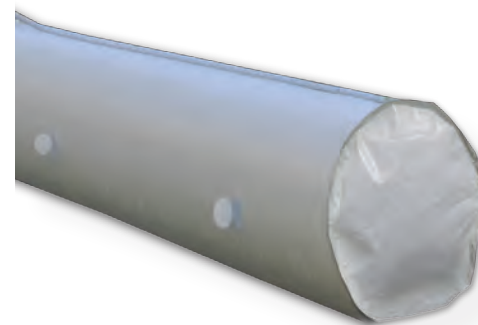


Available Diameters: 8" and 12"
Available Lengths: 16' or 25'
Temp Rating: -22°F to 200°F

PORTABLE BLOWER DUCT

A reliable, durable piece of gear made from PVC fabric for general purpose air movement. It features an integrated storage bag (with carry straps) allowing for clean and compressed storage.

- › Made from PVC fabric for reliable and durable air movement
- › Mold, moisture and mildew resistant
- › Integrated storage sack for storage and transport protection
- › Passes FR testing to NFPA - 701
- › Works on both supply and return air positions
- › Comes standard with Belted Cuff end fittings



Available Diameters: 12", 16" and 20"
Available Lengths: 25' or 50'
Temp Rating: -22°F to 200°F

EVENAIR DIFFUSION DUCT

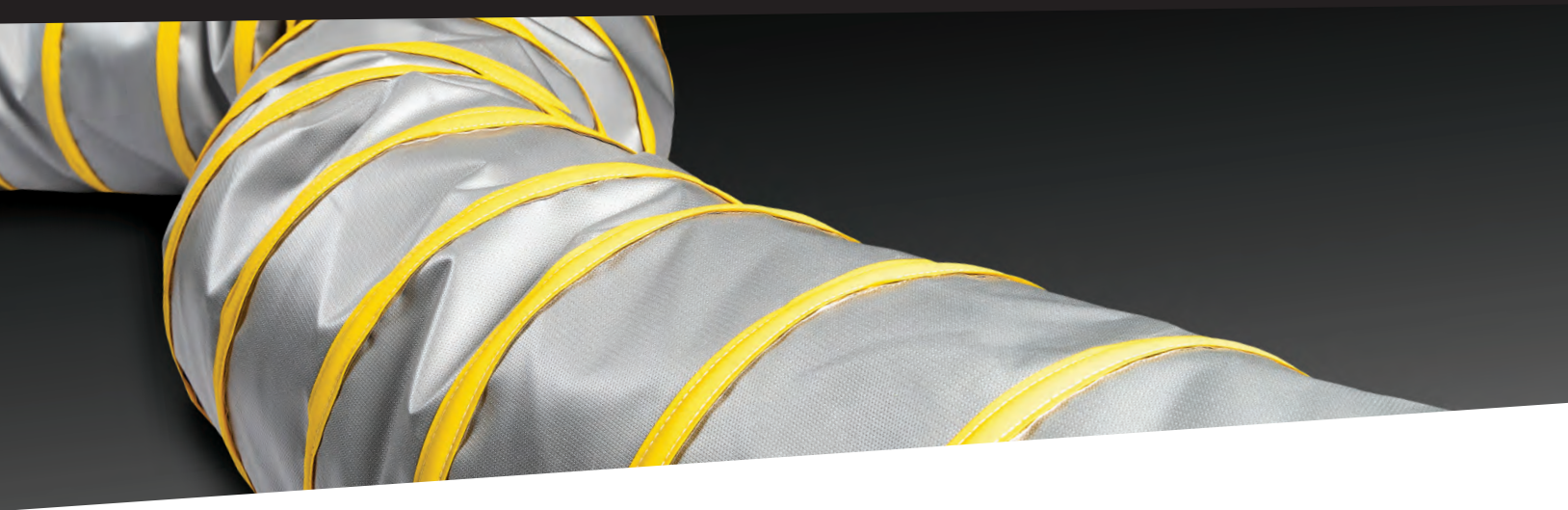
Made with a white Polyethylene (PE) fabric with perforations that allow efficient circulation and distribution of hot or cool air throughout the entire length of the duct on closed worksites in temporary buildings.

- › Reusable high strength Polyethylene (PE) fabric
- › Water repellent and mildew resistant
- › Perforated with 2" vent holes every 48" at 4 and 8 o'clock positions, which disperses air evenly over larger spaces
- › Top sewn grommets every 24" allows for overhead suspension
- › Belted Cuff/Velcro collars allow for easy connection
- › Passes FR testing to NFPA - 701

Note: End caps are also available.

DISPOSABLE LAYFLAT DIFFUSION DUCT

A temporary solution Polyfilm tube made for onetime use.



ADDITIONAL
HVAC DUCTING GEAR

ACCESSORIES

- › Accessories available in “Y”, “T”, 90° Elbow & reducer configurations
- › Sheet metal splitters & reducers could be replaced with our light weight fabric accessories as a cost effective alternative
- › Easy to Install & manage
- › Collapses fully for easy transportation & storage
- › Various configurations in stock
- › Custom accessories can be designed & manufactured to fit any configuration – Ends = Belted Cuff, Pin Lock or Wire Ring

BOX HEATER 12”
ADAPTER

- › All steel adapter for most 12” ductable box heaters
- › Accepts Pin Lock collar ducts/hose systems
- › Easy to install & manage



Y CONNECTOR



ELBOW CONNECTOR



HEATER CONNECTOR



HEATER ADAPTOR

INSULATED BLANKETS
Performance beyond R-value

Cold weather stands between your people and their ability to perform at the highest level. It also impacts their workmanship – affecting the integrity of a variety of construction applications. Norseman **high performance blanket gear** ensures your team can excel at their craft year-round.

- › Verified dimensions and interlocking foam-sewn edge ensure a more precise fit
- › Non-crushable closed microcell polypropylene foam ensures our blankets maintain their integrity even when heavy loads are placed on top
- › Advanced materials provide maximum strength, tear resistance and lifespan
- › Norseman insulated blankets have been shown to reduce jobsite heating costs by up to 50% when used in hoarding applications

BLANKET SPECIFICATIONS

- › Double stitched edge seam ensures the insulation foam will not shift
- › Available in 4-layer or 8-layer thickness with grommets in all four corners. 3-Layer blankets are also available for hoarding applications with grommets every 24”
- › Middle overlapping seam reduces billowing on 12’ wide blankets
- › Custom thickness, sizes, and FR materials available to meet your specific requirements
- › Custom colors and logo imprinting available to enhance brand recognition on your projects
- › For easy, economical shipping and storage, all sizes of blankets are rolled tightly and palletized

4-LAYER		8-LAYER		3-LAYER	
Product#	Description	Product#	Description	Product#	Description
410692FP	6’ x 24’ Orange, Corner Grommets (Folded)	412687	6’ x 24’ Orange, 48” Grommets (Rolled)	403081	6’ x 24’ Orange, 48” Grommets (Rolled)
410692RL	6’ x 24’ Orange, Corner Grommets (Rolled)	412688	12’ x 24’ Orange, 48” Grommets (Rolled)	402313	12’ x 24’ Orange, 48” Grommets (Rolled)
411585FP	12’ x 24’ Orange, Corner Grommets (Folded)				
411585RL	12’ x 24’ Orange, Corner Grommets (Rolled)				



WARM WEATHER DUCTING GEAR

When the temperature rises, Norseman's **Aero Airstream™** helps people keep their cool. This advanced A/C & ventilation ducting gear is designed to excel in multiple applications, including air conditioning, ventilation, dehumidification and air return.



GEAR² PERFORM²

*Contact Norseman Gear Specialists to learn
more about our high performance Gear.*

Proudly serving USA customers through five distribution centers across the country.

1.844.NORSEMAN (1.844.667.7362) norsemanusa.com
customerservice@norsemanusa.com

