



# Product Guide/Line Card

Products to Improve, Repair, Protect and Beautify Concrete





## Introduction

Since 1957, ChemMasters has been serving the construction chemical needs of project design, distribution and installation professionals within the transportation infrastructure, commercial, decorative and residential concrete industry. The ChemMasters Product Guide / Line Card is a helpful resource to understand our extensive product range which includes:

- Concrete curing compounds including cure & seals and highway cures
- Water repellent concrete sealers including penetrating silanes and siloxanes
- Decorative concrete sealers
- Unique 1 Step curing compounds that include a penetrating silane sealer for long-term protection
- Densifiers and hardeners for commercial warehouses, retail spaces and polished decorative concrete
- Cementitious and polymer repair mortars and grouts, self-levelers, primers and bonding agents
- A wide range of pigmented coating chemistries for bridges, walls, concrete swimming pools and building exteriors
- Form release agents

ChemMasters products are widely available throughout the United States, Canada and international construction markets. We support specifiers, contractors and distributors with:

- *A commitment to providing an exceptional customer experience*
- *A knowledgeable and experienced technical service department*
- *Fully staffed and equipped liquid and cement laboratories including custom color matching services for pigmented coatings*
- *Strict quality control producing reliable, consistent and exceptional product performance*

Always family owned and produced entirely within the US, ChemMasters is both large enough to meet your technical needs and small enough to exceed your relationship expectations. The owners, management and employees of ChemMasters look forward to serving you today and for many years to come.



## Water-Based Curing Compounds

### Clear Resin Cures

#### **Safe-Cure® Clear DR**

Clear dissipating resin cure.

*Specifications: ASTM C309, Type 1 (Type 1D upon request), Class B*

#### **EZ Strip Cure™**

Clear curing compound which can be easily removed prior to application of subsequent floor coatings and treatments.

*Specifications: ASTM C309, Type 1 (Type 1D upon request), Class A & B*

#### **EZ Strip Cure DR**

Clear dissipating resin cure for interior & exterior applications. Requires no UV exposure. Easily removed with light mechanical or hand abrasion, or low pressure water.

### Clear Wax Cures - DOT Approved in Many States

#### **Safe-Cure® 1200 Clear**

Clear wax emulsion curing compound.

*Specifications: ASTM C309, Type 1 (Type 1D upon request), Class A*

#### **Safe-Cure® 1000 Clear**

Clear wax emulsion curing compound.

*Specifications: ASTM C309, Type 1 (Type 1D upon request), Class A*

### White Pigmented Resin Cures -

*DOT Approved in Many States*

#### **Certi-Vex® Envio Cure White 1315**

White pigmented Poly Alpha-Methylstyrene (PAMS) resin highway curing compound. *Specifications: ASTM C309, Type 2, Class A & B, ASTM C1315, Type II*

#### **Safe-Cure® 2000AP**

White pigmented resin highway curing compound.

**Meets FAA Requirements for Airport Use.**

*Specifications: ASTM C309, Type 2, Class B; FAA; CRD C300 version available upon request*

#### **Safe-Cure® 2000**

White pigmented resin highway curing compound.

*Specifications: ASTM C309, Type 2, Class B; FAA; CRD C300 version available upon request*

#### **Safe-Cure® 3500**

White pigmented highway curing compound.

*Specifications: ASTM C309, Type 2; MTO approved in Ontario, CA*

### White Pigmented Wax Cures -

*DOT Approved in Many States*

#### **Safe-Cure® 1200 HS**

White pigmented wax emulsion highway curing compound.

*Specifications: ASTM C309, Type 2, Class A; DOT approved in many states; CRD C300 version available upon request; high solids*

#### **Safe-Cure® 1200 06-012**

White pigmented wax emulsion highway curing compound.

*Specifications: ASTM C309, Type 2, Class A; DOT approved in many states; CRD C300 version available upon request; meets Illinois DOT requirements*

#### **Safe-Cure® 1200**

White pigmented wax emulsion highway curing compound.

*Specifications: ASTM C309, Type 2, Class A; DOT approved in many states; CRD C300 version available upon request*

#### **Safe-Cure® 1000V**

White pigmented wax emulsion highway curing compound.

*Specifications: ASTM C309, Type 2, Class A; DOT approved in the state of Virginia*

#### **Safe-Cure® 1000**

White pigmented wax emulsion highway curing compound.

*Specifications: ASTM C309, Type 2, Class A; DOT approved in many states; CRD C300 version available upon request*

#### **Safe-Cure® 800**

White pigmented wax emulsion highway curing compound.

*Specifications: ASTM C309, Type 2, Class A; DOT approved in many states*

### 1 Step White Pigmented Wax Cure & Penetrating Sealer - DOT Approved in Many States

#### **Silencure™ DOT**

White pigmented wax emulsion highway curing compound

with penetrating silane sealer. *Specifications: ASTM C309, Type 2, Class A; NCHRP 244, Series II and Series IV; ASTM C672*



## Film Forming Cures & Sealers

### Water-Based Cure & Seals

#### Silencure™ SRT

High performance, non-yellowing, acrylic co-polymer cure & seal containing penetrating silane for long-term protection from freeze/thaw cycles and de-icing chemicals. Suitable for use on broom finished or hard steel troweled concrete.

*Specifications: ASTM C309, Type 1 (Type 1D upon request), Class A & B; NCHRP 244, Series II & Series IV*

#### Safe-Cure® & Seal EPX

Two-component epoxy curing compound, sealer and primer. Available in clear or pigmented formulations. *Specifications: ASTM C309, Type 1 or 2 (pigmented), Class A & B; NCHRP 244 Series II & IV; ASTM C1315, Type I or II (pigmented), Class B; USDA when cured*

#### Polyseal™ WB

25% solids, non-yellowing, high performance acrylic co-polymer that cures, seals, hardens and dustproofs. Joint stabilizing sealer for interlocking pavers and stones to prevent joint sand erosion. Less than 100 g/L VOC's. *Specifications: ASTM C309, Type 1, (Type 1D or 2 upon request), Class A & B; ASTM C1315, Type I, (Type 1D or II upon request), Class A; VOC Compliant in SCAQMD; USDA when cured*

#### Safe-Seal™

18% solids, solvent-free cure & seal.

*Specifications: ASTM C309, Type 1, Class A & B*

#### Polyseal™ WB 15

15% solids, high performance, non-yellowing, acrylic co-polymer curing, sealing, hardening and dustproofing compound.

*Specifications: ASTM C309, Type 1 (Type 1D upon request), Class A & B; USDA when cured*

#### Safe-Cure & Seal 309

15% solids, styrene modified acrylic curing, sealing, hardening and dustproofing compound for broom finish concrete.

*Specifications: ASTM C309, Type 1 (Type 1D upon request), Class A & B; USDA when cured*

### Low-VOC Solvent-Based Cure & Seals

#### Crystal Clear A

27% solids, low-VOC (<350 g/L), super high gloss, high solids, non-yellowing, siliconized acrylic curing, sealing, hardening and dustproofing compound for decorative and broom finish concrete. *Specifications: ASTM C309, Type 1 (Type 1D upon request), Class A & B; ASTM C1315, Type I, Class A; USDA when cured*

#### Certi-Vex® AC1315 Super Seal HG

30% solids, low-VOC (<350 g/L), super high gloss, high solids, non-yellowing, styrene modified acrylic curing, sealing, hardening and dustproofing compound for broom finish and decorative concrete. *Specifications: ASTM C309, Type 1 (Type 1D upon request), Class A & B; ASTM C1315, Type I, Class A; USDA when cured*

#### Certi-Vex® AC1315 Super Seal Flat

25% solids, low-VOC (<350 g/L), matte/flat finish, non-yellowing, styrene modified acrylic curing, sealing, hardening and dustproofing compound for decorative concrete. *Specifications: ASTM C309, Type 1 (Type 1D upon request), Class A & B; ASTM C1315, Type I, Class A; USDA when cured*

#### Polyseal™ EZ / Polyseal™ EZ Honey Brown

Low-VOC (<350 g/L), bubble resistant, high gloss, non-yellowing, high performance acrylic co-polymer curing, sealing, hardening and dustproofing compound for broom finish and decorative concrete. *Specifications: ASTM C309, Type 1 (Type 1D upon request), Class A & B; USDA when cured*

#### Certi-Vex® AC1315 Super Seal

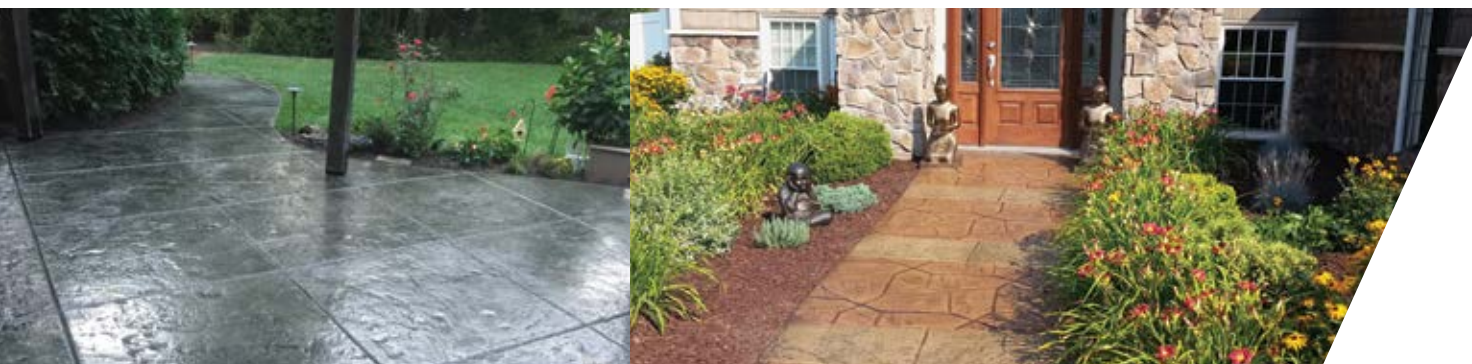
25% solids, low-VOC (<350 g/L), high gloss, non-yellowing, styrene modified acrylic curing, sealing, hardening and dustproofing compound for broom finish and decorative concrete. *Specifications: ASTM C309, Type 1 (Type 1D upon request), Class A & B; ASTM C1315, Type I, Class A; USDA when cured*

#### Spray-Cure & Seal 25 A

25% solids, low-VOC (<350 g/L), non-yellowing, styrene modified acrylic curing, sealing, hardening and dustproofing compound for broom finish concrete. *Specifications: ASTM C309, Type 1 (Type 1D upon request), Class A & B; ASTM C1315, Type I, Class A; USDA when cured*

#### Polyseal™ 309-A

15% solids, low-VOC (<350 g/L), non-yellowing, acrylic co-polymer curing, sealing hardening and dustproofing compound for decorative and broom finish concrete. *Specifications: ASTM C309, Type 1, Class A & B*



## Solvent-Based Cure & Seals

### Crystal Clear

27% solids, super high gloss, high solids, non-yellowing, siliconized acrylic curing, sealing, hardening and dustproofing compound for decorative and broom finish concrete.

*Specifications: ASTM C309, Type 1 (Type 1D upon request), Class A & B; ASTM C1315, Type I, Class A; USDA when cured*

### Certi-Vex® AC1315 HG

30% solids, super high gloss, high solids, non-yellowing, styrene modified acrylic curing, sealing, hardening and dustproofing compound for decorative concrete. *Specifications: ASTM C309, Type 1 (Type 1D upon request), Class A & B; ASTM C1315, Type I, Class A; USDA when cured*

### Certi-Vex® AC1315 Beading Flat

25% solids, matte/flat finish, non-yellowing, styrene modified acrylic curing, sealing, hardening and dustproofing compound for broom finish and decorative concrete. *Specifications: ASTM C309, Type 1 (Type 1D upon request), Class A & B; ASTM C1315, Type I, Class A; USDA when cured*

### Polyseal™

25% solids, high gloss, non-yellowing, high performance acrylic co-polymer curing, sealing, hardening and dustproofing compound for broom finish and decorative concrete.

*Specifications: ASTM C309, Type 1 (Type 1D upon request), Class A & B; ASTM C1315, Type I, Class A; USDA when cured*

### Certi-Vex® AC1315

25% solids, high gloss, non-yellowing, styrene modified acrylic curing, sealing, hardening and dustproofing compound for broom finish and decorative concrete. *Specifications: ASTM C309, Type 1 (Type 1D upon request), Class A & B; ASTM C1315, Type I, Class A; USDA when cured*

### Spray-Cure & Seal 25

25% solids, non-yellowing, styrene modified acrylic curing, sealing, hardening and dustproofing compound for broom finish concrete. *Specifications: ASTM C309, Type 1 (Type 1D upon request), Class A & B; ASTM C1315, Type I, Class A; USDA when cured*

## Water-Based Sealers

### Safe-Seal™

18% solids, solvent-free cure & seal.

*Specifications: ASTM C309, Type 1, Class A & B*

### Paver Enhancer™

Penetrating water-based treatment for many types of architectural pavers to deepen and enhance color development. Minimizes formation of efflorescence and maximizes breathability in a matte finish that resists staining.

## Low-VOC Solvent-Based Sealers

### Traz 25 A

25% solids, low-VOC (<400 g/L), high gloss, non-yellowing, methyl methacrylate sealer with improved chemical resistance for decorative concrete, exposed aggregate, pavers and terrazzo.

### Stamped & Decorative Concrete Sealer 400A

Super high gloss, anti-bubbling, slow evaporating sealer for stamped and decorative concrete. 200% to 300% more working time than traditional low-VOC formulations.

## Solvent-Based Sealers

### Traz 25

25% solids, high gloss, non-yellowing, methyl methacrylate sealer with improved chemical resistance for decorative concrete, exposed aggregate, pavers and terrazzo.

## Tints & Anti-Slip Additives

### Polyseal™ Tint

Concentrated opaque pigment for solvent-based acrylic cure & seals and sealers.

### Polyseal™ WB Tint

Concentrated opaque pigment for water-based acrylic cure & seals and sealers.

### Translucent Tint

Translucent pigment for solvent-based cure & seals and sealers.

### Slip Stop™

Slip resistant micronized bead additive for use with film forming cures, sealers and coatings.



## Penetrating Water Repellent Sealers

### Water-Based Silanes & Siloxanes

#### **PowerSeal® 40**

40% solids, penetrating, water-repellent, chemically reactive water-based silane sealer for DOT and commercial concrete. Low-VOC (<100 g/L). *Specifications: NCHRP 244, Series II & Series IV; ASTM C672*

#### **PowerSeal® 20**

20% solids, penetrating, water-repellent, chemically reactive water-based silane sealer for commercial & residential concrete. Low-VOC (<100 g/L).

#### **PowerSeal® SS Plus**

8% solids, penetrating, water-repellent, chemically reactive water-based silane modified siloxane sealer for commercial & residential concrete and masonry. Low-VOC (<100 g/L).

#### **PowerSeal® SS**

5% solids, penetrating, water-repellent, chemically reactive water-based silane modified siloxane sealer for commercial & residential concrete and masonry. Low-VOC (<100 g/L).

### Low-VOC Solvent-Based Silanes

#### **Certi-Vex® Penseal 244 CT**

100% solids, low-VOC (<250 g/L), penetrating, water-repellent, chemically reactive silane sealer with corrosion inhibiting treatment for DOT and commercial concrete. *Specifications: NCHRP 244, Series II & Series IV; ASTM C672 & ASTM G109, FHWA-RD-98-153*

#### **Certi-Vex® Penseal 244 O/W AIM**

40% solids, low-VOC (<250 g/L), penetrating, water, oil and stain repellent, chemically reactive silane sealer for commercial and residential concrete. *Specifications: NCHRP 244, Series II & Series IV; ASTM C672*

#### **Aquanil™ Plus 100**

100% solids, low-VOC (<250 g/L), penetrating, water-repellent, fast drying, chemically reactive silane sealer for DOT, commercial and residential concrete. *Specifications: NCHRP 244, Series II & Series IV; ASTM C672*

#### **Certi-Vex® Penseal 244 100%**

100% solids, low-VOC (<250 g/L), penetrating, water-repellent, chemically reactive silane sealer for DOT, commercial and residential concrete. *Specifications: NCHRP 244, Series II & Series IV; ASTM C672*

#### **Aquanil™ Plus 40-A**

40% solids, low-VOC (<250 g/L), penetrating, water-repellent, fast drying, chemically reactive silane sealer for DOT, commercial and residential concrete. *Specifications: NCHRP 244, Series II & Series IV; ASTM C672*

#### **Certi-Vex® Penseal 244 40% AIM**

40% solids, low-VOC (<250 g/L), penetrating, water-repellent, chemically reactive silane sealer for DOT, commercial and residential concrete. *Specifications: NCHRP 244, Series II & Series IV; ASTM C672*

#### **Certi-Vex® Penseal 244 400**

40% solids, penetrating, water-repellent, chemically reactive silane sealer in isopropyl alcohol for DOT and commercial concrete. *Specifications: NCHRP 244, Series II & Series IV; ASTM C672; NY DOT approved*

### Solvent-Based Silanes

#### **Certi-Vex® Penseal 244 O/W**

40% solids, penetrating, water-repellent, oil-repellent and stain-repellent, chemically reactive silane sealer for commercial and residential concrete. *Specifications: NCHRP 244, Series II & Series IV; ASTM C672*

#### **Aquanil™ Plus 100**

100% solids, penetrating, water-repellent, fast drying, chemically reactive silane sealer for DOT, commercial and residential concrete. *Specifications: NCHRP 244, Series II & Series IV; ASTM C672*

#### **Certi-Vex® Penseal 244 100%**

100% solids, low-VOC (<250 g/L), penetrating, water-repellent, chemically reactive silane sealer for DOT, commercial and residential concrete. *Specifications: NCHRP 244, Series II & Series IV; ASTM C672*

#### **Aquanil™ Plus 40**

40% solids, penetrating, water-repellent, fast drying, chemically reactive silane sealer for DOT, commercial and residential concrete. *Specifications: NCHRP 244, Series II & Series IV; ASTM C672*

### Boiled Linseed Oil

#### **Anti-Spall 55**

55% solids, boiled linseed oil anti-spalling compound for DOT and commercial concrete. *Specifications: ASTM D235; ASTM D260; AASHTO M126 & M128; Fed. Spec. TTL 190C & TTT 291C*



## Coatings

### Bridge Coatings

#### **Duraguard™ 310CRU**

Two-component, chemical resistant, aliphatic urethane. Standard and custom pigments available. Use Safe-Cure & Seal EPX as primer as part of DOT listed epoxy/urethane coating system. Standard and custom pigments available. *Specifications: ACI 302.89, Table 1.1, Class 1, 2, 3, 4 & 5 floors; USDA when cured*

#### **Safe-Cure® & Seal EPX**

Two-component epoxy curing compound, sealer and primer. Available in clear or pigmented formulations. *Specifications: ASTM C309, Type 1 or 2 (pigmented), Class A & B; NCHRP 244 Series II & IV; ASTM C1315, Type I or II (pigmented), Class B; USDA when cured*

#### **ColorCoat™ XL**

100% siliconized acrylic stain specifically formulated to have superior water shedding characteristics for exterior substrates. Standard and custom pigments available. *Federal Specifications: TTC-555B & TTP 141D*

#### **ColorCoat™**

100% acrylic coating for concrete and masonry. Standard and custom pigments available. *Federal Specifications: TTC-555B & TTP 141D*

### Wall Coatings

#### **ColorCoat™ XL**

100% siliconized acrylic stain specifically formulated to have superior water shedding characteristics for exterior substrates. Standard and custom pigments available. *Federal Specifications: TTC-555B & TTP 141D*

#### **ColorLastic™**

100% elastomeric acrylic coating formulated to bridge hairline cracks, withstand substrate movement and accommodate rapid changes in temperature. Standard and custom pigments available. *Federal Specifications: TTC-555B & TTP 141D*

#### **ColorCoat™**

100% acrylic coating for concrete and masonry. Standard and custom pigments available. *Federal Specifications: TTC-555B & TTP 141D*

#### **TextureDOT™**

100% acrylic, textured coating for concrete and masonry. Standard and custom pigments available. *Specifications: ASTM C309; USDA when cured*

#### **TextureDOT™ - Smooth**

100% acrylic, smooth coating for concrete and masonry. Standard and custom pigments available. *Specifications: ASTM C309; USDA when cured*

### Anti-Graffiti Coatings

#### **Graffiti Stopper™**

Two-component, non-sacrificial urethane that repels most paints and inks used by taggers to create graffiti.

#### **Graffiti Seal™**

Sacrificial anti-graffiti coating.

#### **Graffiti Eraser™**

Removes graffiti from concrete, masonry, brick, block, tile, natural stone or coated surfaces.

### Pool Coatings

#### **Pliolite® Rubber Swimming Pool Paint**

Excellent Protective and Decorative coating for use on concrete and plaster swimming pools that are bare or have been previously painted with acrylic, Pliolite Rubber or chlorinated rubber based paint. Available in Brilliant White, Lite Blue, Blue and Lane Marking Black.



## 1 Step Cures & Penetrating Sealers

### Water-Based

#### **Silencure™ DOT**

White pigmented wax emulsion highway curing compound with penetrating silane sealer. For freshly placed highway pavement only. *Specifications: ASTM C309, Type 2, Class A; NCHRP 244, Series II and Series IV; ASTM C672*

#### **Silencure™ SRT**

High performance, non-yellowing, acrylic co-polymer cure & seal containing penetrating silane sealer for long-term protection from freeze/thaw cycles and de-icing chemicals. Suitable for use on broom finished or hard steel troweled concrete. *Specifications: ASTM C309, Type 1 (Type 1D upon request), Class A & B; NCHRP 244, Series II & Series IV*

### Low-VOC Solvent-Based

#### **Silencure™ A**

Low-VOC (<350 g/L), non-yellowing, high performance acrylic co-polymer, cure & seal containing penetrating silane sealer for lasting protection from freeze/thaw cycles and deicing chemicals on DOT and commercial broom finish concrete. For freshly placed broom finished concrete only. *Specifications: ASTM C309, Type 1 (Type 1D available upon request), Class A & B; NCHRP 244, Series II & Series IV*

#### **Certi-Vex® Guard Clear AIM**

Low-VOC (350 g/L), non-yellowing, high gloss, styrene modified acrylic, cure & seal with penetrating silane shield for decorative, commercial and residential concrete. *Specifications: ASTM C309, Type 1 (Type 1D available upon request), Class A & B*

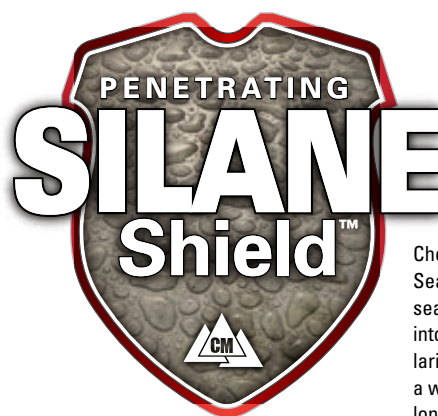
### Solvent-Based

#### **Silencure™**

Non-yellowing, high performance acrylic co-polymer, cure & seal containing penetrating silane sealer for lasting protection from freeze/thaw cycles and deicing chemicals on DOT and commercial broom finish concrete. For freshly placed broom finished concrete only. *Specifications: ASTM C309, Type 1 (Type 1D available upon request), Class A & B; NCHRP 244, Series II & Series IV*

#### **Certi-Vex® Guard Clear**

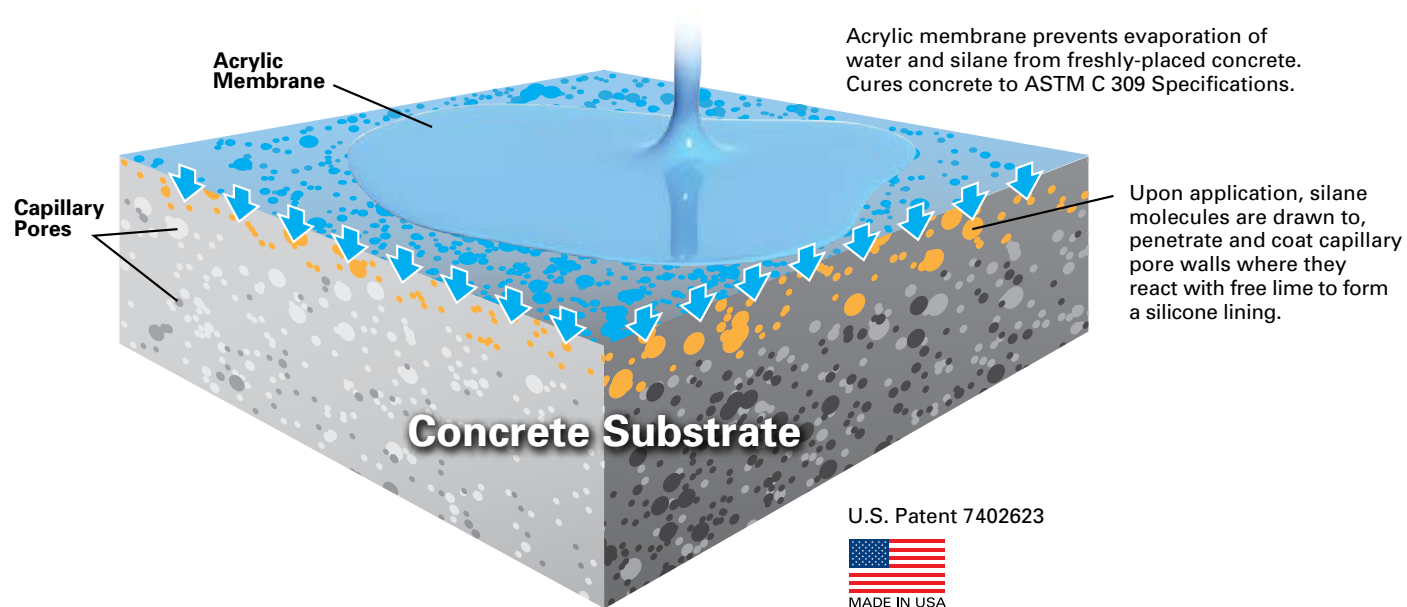
Non-yellowing, high gloss, styrene modified acrylic, cure & seal with penetrating silane shield for decorative, commercial and residential concrete. *Specifications: ASTM C309, Type 1 (Type 1D available upon request), Class A & B*

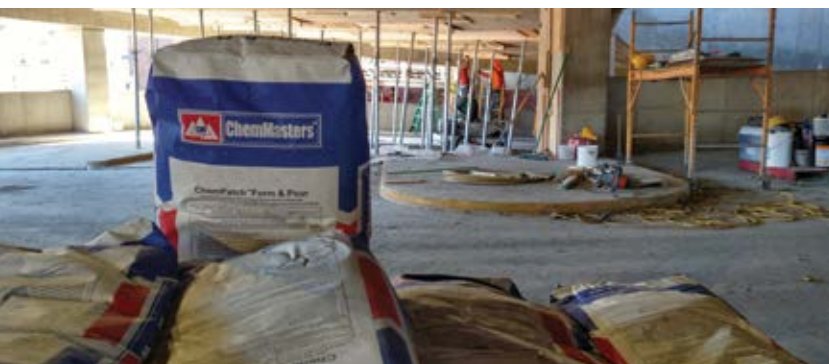


ChemMasters 1 Step Cure & Seals contain an integral silane sealer that penetrates deeply into concrete pores and capillaries where it reacts to form a water repellent silicone for long-term protection against damage caused by freeze/thaw cycles and deicing chemicals. Cure your concrete and add a Silane Shield for enhanced durability, all in one application.



## The Single Day Answer for Fully-Protected Concrete





## Concrete Restoration Products

### Horizontal Repairs

#### **Durapatch™ MMA**

Very high strength, chemical resistant methyl methacrylate patching mortar. Cures in low temperatures.

#### **Durapatch™ EPX**

Very high strength, chemical resistant epoxy patching mortar.

#### **ChemSpeed™ 65**

Rapid setting, high strength, polymer modified highway or industrial horizontal patching material. Can be extended with up to 50% pea gravel for deep patching. *Specifications: ASTM C928, R3*

#### **ChemSpeed™ 75 ES**

One component, extended set "summer grade," high performance mortar with high early strength for structural repair and form & pour applications.

#### **ChemSpeed™ 75**

One component, rapid setting "winter grade," high performance mortar with high early strength for structural repair and form & pour applications.

#### **ChemPatch™ RS**

One component, rapid setting multi-functional repair mortar for a wide variety of horizontal, vertical and overhead repairs.

#### **SpeedPatch™ XL**

Fast setting, gypsum free patching compound with superior freeze/thaw durability. Shavable after initial set.

#### **FeatherPatch™**

One component, fast setting, high strength, polymer modified patching material for horizontal repairs up to 1 inch depth.

#### **ChemMasters Thin Patch**

One component, polymer modified, multipurpose repair mortar designed for thin repairs to horizontal, vertical and overhead concrete.

#### **ChemMix™**

Concrete mix and patching product designed to provide all the performance, workability and cosmetics of ready mix concrete.

### Vertical & Overhead Repairs

#### **ChemPatch™ V01**

One component, polymer modified, high strength, fast setting, non-shrink repair mortar with fiber and migrating corrosion inhibitor for deep vertical and overhead structural repairs.

#### **ChemPatch™ Fast V0**

One component, polymer modified, shrinkage compensated, very fast setting, non-shrink repair mortar with fibers and corrosion inhibitor.

#### **SpeedPatch™ XL**

Fast setting, gypsum free patching compound with superior freeze/thaw durability. Shavable after initial set.

### Form & Pour/Pump

#### **ChemPatch™ Form & Pour**

One component, shrinkage compensated, cementitious fiber reinforced and added Migrating Corrosion Inhibitor (CI) for added protection of rebar and structural steel. Excellent flow and pumping characteristics, suitable for large scale form and pour/pump applications.

### Hydraulic Cement/Plug

#### **ChemPlug™ Fast**

Fast setting expansive hydraulic cement compounded to withstand continual exposure to water and pressure.

#### **ChemPlug™ Slow**

Slow setting expansive hydraulic cement compounded to withstand continual exposure to water and pressure.

#### **ChemPlug™**

Standard setting expansive hydraulic cement compounded to withstand continual exposure to water and pressure.



## Rubbing & Resurfacing

### ChemRub

Rubbing and resurfacing compound for vertical and overhead concrete.

### FinishCrete™ Hot Weather

Hot weather formula, thin resurfacer and block filler for vertical and overhead applications. Spray, trowel or roller apply to create decorative finishes.

## Bonding Agents

### Duraguard™ 100

100% solids epoxy bonding agent.

### Cretelox™

Acrylic integral bonding additive and performance enhancing modifier for thin concrete and dampproof coatings.

*Specifications: ASTM C1059, Type II; ASTM C1438, Type II*

### Polyweld™

Bonding agent for concrete and plaster, rewettable one time.

*Specifications: ASTM C1059, Type I*

### Level Top™ Primer

Primer for Level Top™ and Level Top™ Supreme self levelers.

## Damp Proofers

### Chemseal™

Dampproofing coating for vertical concrete or masonry. Above or below grade, interior or exterior applications.

Standard and custom pigments available. *Specifications: USDA when cured*

### Cretelox™

Acrylic integral bonding additive and performance enhancing modifier for thin concrete and dampproof coatings.

*Specifications: ASTM C1059, Type II; ASTM C1438, Type II*

### MasterGard™ 400

Cold applied, water emulsion, semi-mastic dampproofer for concrete or masonry walls. Non-fibrated for brush or spray application.

*Specifications: ASTM D1227, Type III, Class 1; ASTM D1187, Type I*

## Anchoring

### P.A.C.™ Plus+

Pourable anchoring cement. Fast setting, gypsum-free, high strength, expansive anchoring cement.

# Self-Levelers

## Self-Levelers

### Level Top™

Self leveling, pumpable, gypsum free underlayment.

### Level Top™ Supreme

Self leveling, pumpable, gypsum free overlayment. Polishable.

### Level Top™ Supreme White

Self leveling, pumpable, gypsum free white overlayment. Light reflective. Can be polished, dyed and pigmented to create decorative appearances.

### Level Top™ Primer

Primer for Level Top™ and Level Top™ Supreme self levelers.



## Grouts

### Cementitious Construction Grouts

#### **Conset™ Grout-XT**

Non-shrink, high performance construction grade grout with superior flow characteristics at installation temperature X-tremes. *Specifications: ASTM C1107; CRD C 621 92*

#### **Conset™ Grout NY**

Non-shrink construction grade grout for NY State DOT projects. *Specifications: ASTM C1107; CRD C 621 92*

#### **Conset™ Grout**

Non-shrink construction grade grout. *Specifications: ASTM C1107; CRD C 621 92*

### Specialty Grouts

#### **Met-Ox™ Grout**

Non-shrink, non-catalyzed metallic precision grout. *Specifications: ASTM C1107; CRD C 621 92*

#### **Kemset™ Grout**

Non-shrink, non-metallic high strength precision grout. *Specifications: ASTM C1107; CRD C 621 92*

#### **Gorilla Grout™**

Non-shrink, non-metallic, very high strength construction grout. *Specifications: ASTM C1107; CRD C 621 92*

#### **Cable Grout**

Non-shrink high performance, zero bleed, sand free grout for post tensioned structures.

#### **Polytops™ MMA Grout**

Extremely high strength methyl methacrylate grout cures at temperatures below freezing.

#### **Polytops™ CR Grout**

High strength, chemical resistant, three component epoxy grout.

#### **Polytops™ GC Grout**

High strength, general construction grade, three component epoxy grout.



## Floor Hardeners & Densifiers

### Liquid Floor Hardeners & Densifiers

#### **ChemGuard**

Penetrating, reactive, stain resistant polished concrete guard surface treatment.

#### **Chemisil™ Plus OR**

Chemically reactive, oil resistant treatment for concrete.

*Specifications: USDA when cured*

#### **StarSeal® Fusion**

Chemically reactive silicate crack and hole repair.

#### **Chemisil™ Plus Li**

Chemically reactive solution of lithium-silicate to harden, densify and increase the service life of concrete. Resists white salt adhesion. *Specifications: ASTM C672; ASTM C642; ASTM E96; Fed. Spec. SSW 110C; USDA when cured*

#### **StarSeal® PS Clear**

Chemically reactive solution of potassium-silicate to harden, densify and increase the service life of concrete. *Specifications: ASTM C672; ASTM C642; ASTM E96; Fed. Spec. SSW 110C; USDA when cured*

#### **Chemisil™ Plus**

Chemically reactive solution of sodium-silicate with added silicate to harden, densify and increase the service life of concrete. *Specifications: ASTM C672; ASTM C642; ASTM E96; Fed. Spec. SSW 110C; USDA when cured*

#### **Chemisil™**

Clear, sodium silicate hardener and dustproofer for concrete. *Specifications: USDA when cured*

### Dry Shake Floor Hardeners & Densifiers

#### **Kemplate™**

Metallic aggregate shake-on floor surface hardener. Available in natural or custom pigments.

#### **Concolor™**

Non-metallic, quartz aggregate shake-on floor surface hardener. Available in natural or custom pigments.



## Form Release Agents

### Premium Hydro-Treated Oil-Based

#### **Release**

Oil-based, hydrotreated oil, dual action reactive concrete form release agent.

### Water-Based

#### **Safe Slip™**

Water-based, dual action concrete form release agent.

## Retarders & Accelerators

### Evaporation Retarders

#### **Spray Film™**

Water-based monomolecular evaporation retarder for use in hot, windy or low humidity conditions.

### Surface Retarders

#### **Exposee™**

Surface retarder to create exposed aggregate look.

### Set Accelerators

#### **Freezban NC™**

Non-Chloride accelerator and densifier for concrete and masonry. *Specifications: ASTM C494, Type E; AASHTO M 194, Type E; CRD C87, Type E*

#### **Freezban™ / Freezban™ Beads**

Accelerator for mortar, cement-based plaster and stucco. Available in liquid or bead formulations. *Specifications: ASTM C494, Type C; AASHTO M 194, Type C; CRD C87, Type C*



## Crack Repair & Sealers

### High Molecular Weight Methacrylates

#### **Duraguard™ 401-30E**

Very low viscosity, solvent-free, high molecular weight methacrylate penetrating sealer and crack healer with enhanced elongation for high flexural applications.

#### **Duraguard™ 401**

Very low viscosity, solvent-free, high molecular weight methacrylate penetrating sealer and crack healer.

### Epoxy

#### **Duraguard™ HM Sealer**

100% solids, low viscosity, high modulus, moisture insensitive, gravity fed or injection epoxy crack filler and sealer.

## Coating Repair Solvents, Lubricants and Cleaners

### Triple Action Lubricant & Corrosion Inhibitor

#### **Barracuda®**

Triple action multi-purpose penetrant, lubricant and corrosion preventative available as an aerosol or liquid.

### Coating Repair Solvents

#### **ChemMasters Coating Repair Solvent**

Slow evaporating, high power solvent for tool cleanup and repair of bubbles, whitening, roller and sprayer marks in solvent-based coatings.

#### **Xylene**

### Cleaners

#### **Skid Daddle™**

Specialized cleaner to remove rubber tire marks from epoxy or polymer floor coatings and smooth finish concrete without damaging the surface.

#### **Graffiti Eraser™**

Removes graffiti from concrete, masonry, brick, block, tile, natural stone or coated surfaces.



## Our Knowledge is **Concrete**<sup>SM</sup>

We manufacture a complete line of specialty products to improve, repair, protect and beautify concrete and masonry. Contractors rely on our experience, knowledge & quality to help ensure success.



INTERNATIONAL  
CONCRETE REPAIR  
INSTITUTE



American  
Society of  
Concrete  
Contractors



300 Edwards Street  
Madison, OH 44057

Phone: 440-428-2105  
Toll-Free: 800-486-7866  
Fax: 440-428-7091

[www.chemmasters.net](http://www.chemmasters.net)  
[info@chemmasters.net](mailto:info@chemmasters.net)